



PRE-QUALIFICATION



Construction & IT Solutions



SIT Arabian

Contracting Company Limited

TABLE OF CONTENTS

COMPANY PROFILE

COMPANY SUMMERY

COMPANY REGISTRATION & LICENSE

CERTIFICATES

RESOURCES

ORGANIZATION STRUCTURE

KEY PERSONAL PROFILE

MANPOWER & TECHNICAL STAFF EXPERIENCE

KEY MACHINERY & EQUIPMENT

EXPERIENCE

LIST OF MAJOR CLIENTS

MAJOR PROJECTS EXECUTED

CONSTRUCTION MANAGEMENT METHODS

SAFETY STATEMENT

QUALITY STATEMENT

ENVIRONMENT STATEMENT

FINANCIALS

FINANCIAL HISTORY

BANKS DETAIL

CONTACT INFORMATION



INTRODUCTION

SIT Group is formed by professionals to cater the growing market requirements, with specific solutions targeting various industries in different business segments. SIT Group provides to their clients the very best in a wide variety of innovative products & services. We have a strong customer centric approach that ensures a stable and long term Relationship with our clients and successfully completing the project on time and on budget.

SIT is a global company committed to provide Services in variety of industry verticals across the globe. (SIT) integrates various products and services to deliver customized solutions, (SIT) uniquely position with Global Delivery Model offer best wide range of services and Resources from market talent pool across the globe to deliver optimal solutions.

SIT ARABIAN CONTRACTING CO LTD is operating from its Head office and branches located within close proximity to the main industrial companies of the Kingdom of Saudi Arabia. **SIT** now operates as one of the EPC Contractors in Civil, Electrical, Mechanical, and Automation & Instrumentation in Saudi Arabia with having highly experienced permanent employees who are qualified up to international standards to undertake the Company's various projects using highly specialized working methods. Presenting this profile/Pre-qualification to you, it is our sincere wish that you may learn something of our capabilities, capacities and contributions we are making to the industries in Saudi Arabia as well as in other GCC countries. We trust that within these pages you will find the answers to some of your problems. Whether your interests in us are as a supplier of services, as a joint venture partner or out of general interest, we would be delighted to study your requirements, answer your queries and to inform you more about our work, our organization, and the people that make it happen.

Name : SIT ARABIAN CONTRACTING CO LTD (ISO Certified Co.)
Business Address : Mafla Tower 4th -floor, 4B-Al-Khobar
E-Mail Address : info@sitgroup.in / gm@sitgroup.in
Website : www.Sitzones.com
Commercial Registration No. : 2051237059
Bank : AL-JAZIRA BAN-ALINMA BANK
Owner : M/S SIDDIQUI INFRATECH CO.W.L.L
Represent By : Mr. SHAIK SAYEED General Manager.
Mobile Number : 0563084888.



Our Mission:

To consistently create value for our stakeholders, by providing solutions which facilitate our clients to achieve brilliance and sustainable competitive edge. We are committed to enhancing customer satisfaction by consistently providing services that reflect quality, reliability, speed, versatility, confidentiality and adaptability.

Vision:

To be amongst the Global Top 10 providing IT services by 2020. We have always prided ourselves on the vision, skills, expertise and professionalism of our team. Our team members make use of their keen Insight to forecast industry trends and meet demanding customer needs. And the working of their collective minds in a highly supportive environment ensures that our products and services retain a competitive edge at all times.

Values:

We look at the Core Value of Integrity as the very soul of our company. The trusted relationship that we share with our customers and business partners, and the faith reposed in us by our stakeholders.

Innovation

Integrity

Quest for Excellence

Customer Delight

Respect for Individuals

SIT ARABIAN team is comprised of experts from around the world that strive to meet all client needs and maintain the highest quality and standards for every project. Our staff augmentation to various sectors, such as IT Solutions, oil & gas, petrochemicals, power, utilities, and construction. Our team brings proven expertise to every project.

SIT ARABIAN contracting activities consist of the following:

General construction: Specialization in Gas Stations, prefabricated buildings, warehouses, commissary, training centers and workshops, chiller buildings, housing, mosques and administrative buildings as well as offices.

Special construction: sewage collection and wastewater treatment plants, airport baggage conveying systems and buildings for the automated control of utilities.



SIT ARABIAN Contracting Company LTD Grade A contracting firm and the leading specialist company under SIT Group. Having evolved over the years, the enterprise now boasts an impressive portfolio, an increasing number of projects and a growing turnover.

SIT ARABIAN frequently takes on established global organizations for the chance to carry out projects in the vicinity. The company is frequently approached by neighboring firms to participate in large scale, specialized projects—ones that have previously relied upon renowned international firms.

The talented individuals behind SIT ARABIAN carry out total turnkey contracts and act as subcontractors for both local and international contracting companies. SIT ARABIAN has an extensive work history, and has been involved in major expansion projects and developments in INDIA, BAHRAIN, UK AND KSA.



CIVIL

The company is equipped to undertake the entire scope of civil work. to say SIT Arabian can execute the job orders for industrial foundation and slabs, culverts, acid, pipe and cable trenches. Further we engage, the projects for commercial and industrial buildings, office premises, sports complex, clubs, hospitals, housing compounds, orvill as, storage tanks, curb stone all types of fences interior and exterior decorative painting as well as finishing job order. SIT ARABIAN carry out Electro-mechanical works and related activities in the construction of buildings, Industrial plants, infrastructure and other related facilities. We especially high standard and technological buildings, such as Hotels and Hospitals, Airport terminals , all types of industrial facilities and factories ,Water treatment facilities, Power stations, Pumping stations, Holiday villages, Airfield , Apron lighting and gas stations. With its head office registered in AL Khobar



Electrical

Over the last dedicate, our expert electrical team has engineer, procured, installed and commissioned large, medium and short range plants and or projects. We achieved an outstanding status though our professional commitment, time management, adhering to quality and international standards right from the planning to execution. Hence we are capable to deliver electrical projects on time to our valued customers, keeping expertise in pace to their needs, value and satisfaction. Power generation and distribution / High voltage distribution and switchgear / Low voltage distribution and switchgear / Indoor and outdoor lighting including special lighting system / Grounding and lighting protection / Process control and instrumentation / HVAC electrical and control system / Telephone systems (PBAX) / UPS system / Dimmer systems / Closed circuit TV systems (CCTV) / Master Antenna TV systems (MATV) / Security systems / Fire detection and alarm systems



Mechanical

SIT Arabian has long history of mechanical job and is present in every work we undertake.



Building on the expertise of our personnel we deliver the highly skilled resources needed to successfully undertake projects. Competent project management superintendent front line supervision and skilled craftsman ensure each job is completed safely and on schedule. we are capable to accommodate your requirement in mechanical aspects. Central heating and distribution systems / Process piping / Steam, superheated water, hot water pipelines / Erection of industrial facilities / Sanitary installations, plumbing, domestic and waste water installations / Rain water and drainage system / Heating systems / HVAC systems / Cold rooms / Clean rooms and hospital hygienic systems / HEPA filters and laminar flow units / Kitchen equipment and installations / Laundry equipment and installations / Fire protection and firefighting systems / Irrigation systems / Drainage works / Infrastructure works.



Our Technical Backup services relevant to and subsidiary from the Electromechanical sector, through huge bunch of years while covering various facilities over a huge geographical territory on 24/7 basis. We strongly succeeded in handling all unlimited assigned responsibilities comprising complexly interfering activities beyond description, where such success allowed SIT Arabian to fill the Pioneer position Technical Backup services provider at the hugest and toughest Clients in the Saudi Market, with zero delay records. We work honestly for ensuring the brightest future of our Company, while being fully aware

that the Electromechanical Sector is considered as hugely unlimited sector that's highly demanded by all Clients at all levels, that's one of the pillars of the modern human civilization.

SIT can have the greatest impact:

Energy generation, transmission/distribution and use:

Smart grids – integrate alternative E; Efficient

On the use side: in controlling variable rate motors (smart motor systems)

Smart buildings, smart industrial processes

Smart logistics & transportation

Dematerialization



Smart cities: bringing it all together in a sustainable human ecosystem

40 % of energy consumption comes from buildings (commercial & residential)
HVAC & lighting

75 % of the people live in cities

Applying sensing, measurement and control devices with two-way communications to electricity production, transmission, distribution and consumption

Link grid condition to system users, making it possible to dynamically respond to changes in grid condition.

Includes an intelligent monitoring system that keeps track of all electricity flowing in the system
Capability of integrating renewable electricity such as solar and wind

SIT Power Solutions designs and installs Top-quality commercial solar energy systems. That deliver lasting value. Because, We have over 3 years of experience with, Every imaginable type of commercial, Solar installation, we're able to offer a wideVariety of solar options for businesses and Commercial property owners.

If you're looking for an innovative approach to solar that's a cut above other solar installers , talk to us about your commercial solar needs. Trusted Expertise with Commercial Projects Large & Small Agricultural ground mounts, solar parking canopies, flat-roof ballasted systems with battery storage, micro grids, shade canopies and every other solar option available — we've done them all. Our customers include wineries, warehouses, farms, restaurants, factories, resorts, schools, cities, ranches. Because of our unique ability to handle the technical challenges and demanding environments of commercial off-grid installations, we've designed and installed numerous commercial off-grid systems INDIA AND MIDDLE EAST.



IT SOLUTIONS

SAP Services

SIT has a dedicated team of SAP experts who build the value case for migrating to S/4HANA. We use the right tools to underpin our approach and practice the best methods, processes & insights to move our clients forward for a stronger SAP infrastructure.

Mobility

Mobile technology include application creation, UI/UX design, cross-platform design, server side development, testing, application migration and consulting. Our strength lies in offering you an integrated mobile experience

Information Management

Our security experts can help reduce the risk of Security, Hacking, Virus and other means to hijack business data by creating security baselines for your environment.

Infrastructure

Your Infrastructure, Our Services – Whether your Infrastructure needs to be monitored, managed or maintained, we can surely be of assistance.

Cloud Offerings

We have the right collaborations and support services to provide you the cost effective hosting solutions. Our cloud instances are highly available and have the DR capability.

Intelligent Robotic Process Automation

Our SAP Intelligent Robotic Process Automation services aim to improve your efficiency by identifying and mitigating manual processes. As the robotic process automation layer of SAP's Business Technology Platform, we can redirect resources to high-value activities and processes.

Big Data & Data Analytics

Our Big Data practice brings in expertise of wide range of tools and technologies to build platforms that help Organizations unravel meaningful information from the treasure of voluminous hidden data. Through our expertise we ensure that our DW / BI solutions align with your organizational goals and objectives ensuring that every decision maker is empowered with enough information to take better and faster decisions. We use, Azure®, Hadoop®, Pig & Hive®, Python®, R & R-studio® & Snowflakes® applications.



SIT ARABIAN

Mobile Application Development

The Mobile experience has become a part of our everyday life. The demand for mobile apps has escalated in all businesses to face the ever-growing competition. To cope with that, we offer customized end-to-end Mobile Application development services over multiple platforms.

At SIT ARABIAN IT solutions, we employ futuristic approach while developing applications on major Operating Systems like iPhone, iPad, Android, BlackBerry, Symbian, and Windows Mobile & J2ME. We offer incredible mobile experiences that help clients meet business goals and generate ROI.



The process of development requires patience, skills, and viability together. You need mobile app developer with these traits, who is as passionate as you are for the project. Whether you want to go with iOS app development or you intend to have Android app development, the vital key to success is to have these attributes during app design and development process.

Our Mobile application Services on various platforms like iPhone, Android, Blackberry, iPad, iPod and Windows includes

- Custom Mobile App Designing & Development
- Mobile App Integration & Testing
- Mobile App Maintenance and Support
- Mobile App Up-gradation & Migration
- Mobile App Deployment to Google Play Store and Apple Store

Enterprise resource Planning

SIT Arabian IT solutions offers Enterprise Resource Planning Software that integrates all aspects of an operation in a single database, application and user interface. The ERP software handles activities like recording client collaborations, deals following, pipeline management, Purchase Management, Document management, HR interfacing, Inventory management, Project Management and designing marketing campaigns. From order placement, shipping, billing, accounting, tracking and supply chain details.



We provide configurable ERP Solutions so that Clients can manipulate many features conveniently themselves without requiring support from the development team. You can also integrate them with Mobile Apps so as to get full freedom to access all the critical data on your Mobile or Tablet devices.

Customer Relationship Management

SIT Arabian IT solutions extend our CRM software services to various domains like manufacturing, distribution, trading, banking/finance, hospitality, media, real estate etc. Our software is diligently designed suit the diverse needs and preferences of businesses operating in diverse industry verticals.

Based in Bahrain / India and UK, we provide state-of-art and cost-effective CRM solutions to a multitude of industries. Our web-based CRM solution allow users to access data anytime and anywhere, which in turn helps an organization to save time and cost leading to increased ROI.

Software As A Service(SAAS)

Internet connectivity is increasing by every day. Initially, connectivity was possible only with the computers which were using same hardware and software technologies, which was insufficient to fulfill the ever-growing needs. So there was a necessity of a kind of a system that can allow inter-platform communications or a communication which is independent of the Operating Systems and Programming Languages. Web services were introduced to address this issue.



Whether you are a small, medium or large organization, saas helps! ?

At SIT Arabian IT solutions, we offer Software as a service or SaaS services which is a distribution model where we host all your applications and make it available to you over the internet. With proven abilities and outstanding performance, we deliver quality, cost effective and customer centric Cloud Solutions for new software to be developed and also to the existing on premise applications as well. So rather than relying on desktop software or traditional servers, your software will be hosted and available on cloud with Instant Access for Multiple Users with their respective role authorization.

Main Benefit Of Saas Is That You Can Access Data Anytime And Anywhere



- Depending on your need and requirement you can choose the services
- Select only the features you need at an affordable price and safe money
- Tighter Security & Better Reliability, means you can take your business to the next level
- Our experienced team will look after all your cloud computing needs
- Requires less in-house staff, because we will handle all your IT concerns
- We handle all from support to security and Most Important Data backup

Web Applications

SIT Arabian IT solutions is a company focused on converting your idea into a full-fledged workable and usable Software solution using the latest technologies. We combine business analysis with leading creative web design skills and technical experience to provide you with the best possible return on your software development investment.

At SIT Arabian IT solutions, we create diverse, effective and customized software solutions for corporate equipped with the latest technology trends that help you solve your business needs, automate your process and thus gain a competitive edge in the market. We have developed customized Web Applications for various domains.

User Friendly and Rich Desktop Applications

SIT Arabian IT solutions is a company focused on converting your idea into a full-fledged workable and usable Software solution using the latest technologies. We combine business analysis with leading creative web design skills and technical experience to provide you with the best possible return on your software development investment.

At SIT Arabian IT solutions, we create diverse, effective and customized software solutions for corporate equipped with the latest technology trends that help you solve your business needs, automate your process and thus gain a competitive edge in the market. We have developed customized Web Applications for various domains.

Custom Desktop Application Services Includes

At SIT Arabian IT solutions, we define your requirements, develop a solid functional specification, design wireframes, develop the application, and then test thoroughly before deployment. We design and build Desktop applications with technologies like C# development, ASP.NET development, Adobe AIR, JAVA Development.

- User-friendly interface



- Rich and easy functionality
- Utilization of latest technologies
- Various Add-ins to improve feature
- Low-cost development services
- Product documentation and specification

Web Applications

SIT Arabian IT solutions is a company focused on converting your idea into a full-fledged workable and usable Software solution using the latest technologies. We combine business analysis with leading creative web design skills and technical experience to provide you with the best possible return on your software development investment.

At SIT Arabian IT solutions, we create diverse, effective and customized software solutions for corporate equipped with the latest technology trends that help you solve your business needs, automate your process and thus gain a competitive edge in the market. We have developed customized Web Applications for various domains.

Business Web Application / CRM & ERP Application / Content Management System / E-Commerce Websites / Productivity & Utility Application / Industrial Application / Marketing and sales Application / Third Party API Integration



Web Services

Internet connectivity is increasing by every day. Initially, connectivity was possible only with the computers which were using same hardware and software technologies, which was insufficient to fulfill the ever-growing needs. So there was a necessity of a kind of a system that can allow inter-platform communications or a communication which is independent of the Operating Systems and Programming Languages. Web services were introduced to address this issue.



How Does Web Work?

Web Services are self-described, component applications that can be published, located, and invoked across the Web. They are reusable web-based applications that can be accessed through different hardware platforms and operating systems. XML and HTTP is the basic platform for web services. It is a standardized way of integrating web applications using web service standards and protocols for accessing and developing web services such as XML, SOAP, WSDL, and UDDI. XML is used to format the data retrieved by the protocol, SOAP is used to transfer the data, WSDL describes the availability of web service and UDDI provides the list of available services.

At SIT Arabian IT solutions, we provide an extensive set of products and services which you can use as building blocks to run sophisticated and scalable applications. Our dedicated skilled team has proven capability to meet your specific business needs for scale, operations, security, and compliance.

In the business world, web services provide a mechanism of communication between two remote systems, connected through the network. The business applications as Web Services, the information systems of different companies can be linked. These business systems then can be accessed by using simple SOAP messages over the normal HTTP Web protocol.

Why Use Web Services?

One of the main features of Web Services is Interoperability. This means that the remote service will be able to be consumed by clients on other platforms.

Another important feature is Internet friendliness. The web service solution works well for supporting clients that access the remote service from the Internet.

There is no ambiguity about the type of data sent to and received from a remote server.

Web services have the ability to leverage existing Internet standards. This means it can leverage existing toolsets and products created for the technology.

They have comprehensive security capabilities to satisfy the most demanding information security requirements.

It provides support for any language. A client on the remote end can implement a new Web service or use an existing Web service regardless of the programming language in which it was written.

Web services do not require to purchase, install, or maintain a distributed object infrastructure just to build a new remote service or consume an existing service.



Why Choose Us?

- Providing Support and Up-gradations and when required
- Develop custom Mobile application on various platforms
- Deep knowledge of frameworks and mobile technologies.
- User-friendly & easy to use interface
- Providing Support and Up-gradations and when required
- Experienced team of professionals
- Competitive price of development
- Easy Customization and up-gradation
- On Time delivery and cost-effective services

Business Analysis

Business analysis is a vital first step in the software consulting process because it identifies enterprise needs and helps build IT solutions aligned to these needs. An effective business analysis is also crucial since it provides its management, business intelligence, which in further allows them to study business performance, explain shortfalls in performance and devise strategies for improvement.

At SIT Arabian IT solutions, we aspire to provide you with substantial and secure analysis services for developing well-organized business decisions and supporting business operations for impactful business growth. With strong analytical and problem solving skills, our team aims at identifying initiatives that will allow your business to meet organizations goal.

Why Choose Us ?

We always work with the latest tools and technologies that help us to provide best grade quality analysis solutions to our clients. We also give regular training to our professionals so as to make them aware with latest trends in software testing. We strive to provide the services you need to make you're testing & quality assurance effort a success and as easy & effective as possible. The testing process takes place throughout the Software development lifecycle to find out and eliminate the bugs present in a Software application. No matter what concerns you have with quality, cost and project management make this a rather difficult decision.



Business IT Consulting

IT solutions of a company can be made more effective if the process of building them is preceded by a thorough and detailed business analysis. Our experienced team works with using RUP and UML methodologies.

PLAN & DISCUSS

Conduction and performing feasibility studies, Planning and management of the requirements.

BUILD CONCEPT

Coming up with new business designs and processes for determining, defining and scoping the best solutions.

DEVELOP & USABILITY TESTING

Performing initial level risk assessment and Developing a business architecture and performing assessment and validation test of the solution.

PROJECT DELIVERING

Project Delivery and Significant reduction in the overall project costs and Risk & Disaster management Services

Project Management

Project Management software offers a single solution to connect everyone from CEO to Clients. The primary and principle intention with Project Management software is to facilitate the planning and tracking of project components, stakeholders, and assets. The primary functions include Project planning, Task management, Document collaboration and sharing, Calendar and contact sharing and Reporting.

FOR SMALL (OR) MEDIUM (OR) BIG ENTERPRISE

We provide Project Management software which is a suite of products to streamline core functions of any business and maximize productivity from the projects.

USER FRIENDLY AND EASY TO USE PLATFORM FOR ALL.

We provide an easy-to-use platform for the enterprise to help them manage their end-to-end process, take away their pain points and let them focus on their business growth



TEAM CO-ORDINATION FOR BETTER EXECUTION.

It is the new way for your team to communicate, organize, track and get work done in one place with no more bottlenecks, no more blind spots, and no more disconnected processes.

CUSTOMIZABLE ACCORDING TO THE PROJECT NEEDS

We provide Project Management software which can be customized according to your requirements and appropriate and scheduled plan of the project

WHY USE PROJECT MANAGEMENT SOFTWARE?

Maximum productivity from the projects / Real-time status of the projects / Discussing project issues and queries becomes very easy / Better Time management, Resource and Scalability / Strengthen communications between team members / Best way to confirm savings in time, resources and money

IT Enabled Services

In today's fast-paced business world, it is important to focus on your core competencies and outsource the rest. Companies that outsource their support services are found to be more efficient and profitable than those who try to do it all in-house. You save in terms of time and money thus leading to reduced costs and increased competitiveness.

IT has become an essential part of any organization that needs to survive the new economy rush. A variety of services are included in the ITES domain. The information technology services that lead to a betterment in the quality of services for a business is termed as IT-enabled services. Also called Web-enabled Services or Remote Services or Tele-working, this field covers the entire spectrum of operations which exploit Information Technology for improving the efficiency of an organization.

Data Search Integration And Analysis

We provide ITes that are used in various stages starting from data and workflow management to data warehousing, mining and business intelligence. Our clients avail benefits such as cost reduction, improvement of service and improvement in process efficiency.

Customer Interaction Services – Call Centers

ITES is an essential infrastructure for some Medium & larger organizations. Especially service organizations which experience large turnover of data and have a frequent and extensive customer interface in which, tolerance for customer dissatisfaction is low.

Human Resource Services & Payroll Management



We also provide customized solutions in the field of product management, independent testing and enterprise applications. Our skilled manpower ensures that clients are served efficiently which further reduces the cost and time of the organization we are working for

Several Factors In Leading To The Growth And Development Of The It Enabled Services Industry

- Improve company focus
- Reduce and Control Operating costs
- Improve quality
- Reduce time to market
- Foster Innovation
- Make capital funds available
- Access to world class capabilities
- Free resources for other purposes
- Resources not available internally
- Accelerate reengineering benefits

Innovative Approach Quality Solutions

Our core service philosophy is based on a commitment to Innovative Approach and a commitment to Quality Solutions. Our teams are highly focused on creating value for our clients and thus maximizing their return on investment

We offer the highest caliber consultants and strategic alliances with industry leading partners, creating meaningful solutions and results at an exceptional value.



SUCCESS SOLUTIONS FOR BUSINESS INTELLIGENCE

Our Mission to meet the requirements of our valued customer in the industry with quality and safety. SIT Group employer in the human resource is talented skilled and non-skilled human resource with immediate mobilization availability. Following list shows the available human resource Via Named Eastern Vison but not limited Founded in 2005, SIT ARABIANN. Is 100% foreign investment Company re structured in SIT Group as SIT ARABIAN Contracting Company Ltd, operating through its main headquarters in Al-Khobar.



SIT ARABIANN provides a complete range of General Managed Manpower Services, Technical Operations and Maintenance, including Seismic Survey Support Services, Construction Support Services, Marine Services, Industrial Cooling Support Services, Landscaping, Civil Engineering, Pipeline Support Services, Water Injection Services, Water Intake Support Services, Industrial and Environmental cleaning, Thrust Boring, Irrigation Systems Support Services, Industrial and Commercial Painting, Camp Construction, Malls , hotels , Emedia , Advertising , IT solutions, Palace Refurbishment, Construction of Fish Farms, Outsourced Packaging Operations and Skilled Manpower to execute special assigned works.

SIT ARABIANN provides a complete range of General Managed Manpower Services, Technical Operations and Maintenance, including Seismic Survey Support Services, Construction Support Services, Marine Services, Industrial Cooling Support Services, Landscaping, Civil Engineering, Pipeline Support Services, Water Injection Services, Water Intake Support Services, Industrial and Environmental cleaning, Thrust Boring, Irrigation Systems Support Services, Industrial and Commercial Painting, Camp Construction, Malls , hotels , Emedia , Advertising , IT solutions, Palace Refurbishment, Construction of Fish Farms, Outsourced Packaging Operations and Skilled Manpower to execute special assigned works.



"Every Single Job, no matter how small it is,

If it is done properly.... it makes a big difference"

We are pleased to take this opportunity to give a brief description of our company and its main activities, resources and capabilities. We feel proud to introduce ourselves that we SIT ARABIAN Gen. Contracting Company Ltd. For general contracting has been re-structured into establishment with 100% foreign investment Company ownership indented to deal in all type of construction work (Civil, Mechanical Electrical and Maintenance/ Malls /Hotels / Advertising/ E-media and IT solutions/. General services and Professional Manpower supply as SIT ARABIAN Contracting Company Ltd.

Our establishment already has recruited highly qualified, motivated and well-experienced persons to cope with the requirement of list clients. SIT ARABIAN has already engaged in supply of different categories of supervisory skilled and unskilled manpower of different disciplines to various clients including supply of Labors as required.

SIT ARABIAN has fully furnished and well-equipped office complex located at Al Khobar. To serve our clients in a professional manner, our office staff is comprised of Engineering, accounting, liaison and clerical categories.

SIT ARABIAN has fully furnished camp facilities in AL Khobar with all basic amenities for our workforce. We request either you to consider our Group for any services, you may require on current or forth coming projects. In case any other specialized services are needed, not covered therein, SIT ARABIAN with the help of readily available professional consultant in the respective fields, will develop viable solution to such need for the ultimate satisfaction of its clients.

Please feel free to contact us at any time for any further information you may need to evaluate the capabilities of our establishment. Our Group will look forward to work with your esteemed company and prove our capabilities.





Laser Scanning & 3D Modeling

Providing accurate As-built plant and asset documentation for reverse engineering, tie-ins and expansion.

Laser scanners from FARO & Leica available for immediate site mobilization.

Highly experience team of scanning experts and surveyors.

Engineering Centre based in India with all licensed process and modeling software (LFM, Cyclone).

Providing coverage to entire GCC region.

Executed in KSA more than 5 projects for Saudi

Aramco and SABIC under GES+ companies. Full back office support extended during project design life cycle.

Electrical & Instrumentation Works -



Supply & Installation of E&I Packages for Plants and Facilities

Experienced team of engineers and technicians (CWQAP Certified) for successful project execution

Working with EPC and OEM's for installation of instrumentation systems and solutions

Analyzer Systems

Flowmeters

Gas Detection System

Field Instrumentation

Team available for Shutdown and Turnaround Projects

Engineering Documentation and Drawings updation support extended for project

Engineering Services

Steel structure modelling and Detail Engineering in Tekla software.

Digitization of Old drawings from manual to electronic format for all disciplines

Design and detail engineering for static equipment's such as Pressure Vessels, Heat Exchangers, API 650 Storage Tanks.



Piping design & Engineering services from conceptual studies (FEED) to detail engineering (DEED), from 3D modeling to 2D Drafting, from stress analysis to as built.

Software for Modeling: Aveva PDMS, Intergraph PDS, Integraph SP3D & P3D
ETAP Study & Analysis

Rope Access Works

Ability to undertake specialist jobs for Rope Access based work covering

NDT Inspection

Blasting & Painting

Weld Repair & Maintenance

Electrical & Instrument Installation Work

Drop Surveys & LEAA Inspection for Lifting equipment

Deputation of IRATA approved manpower with complete tools and tackles for multi-disciplinary works

No need for scaffolding

Fast work and cost effective

Flameproof & Ex-d Rated Equipment

Supply of power panels, breakers units, aluminum die cast enclosures for hazardous area & classified zone.

ATEX certified

Custom made products for

Isolation Switch

Hazardous area lighting

Motor Starter Panel

Control Gear Box

Enclosure for CCTC camera in hazardous area and weatherproof

EQUIPMENT & SYSTEM DETAILS

3D SCANNER SYSTEMS FOR REVERSE ENGINEERING BLUE LIGHT SCANNER, WHITE LIGHT SCANNER, NDI LASER SCANNER, ARTEC 3D HANDHELD SCANNER

3D MEASUREMENT SYSTEMS FOR DIMENSION CONTROL LASER TRACKER, NDI OPTICAL TRACKER NEW ORDERS-API LASER TRACKER, LEICA LASER TRACKER & PORTABLE ARM CMM

3D LASER SCANNING SYSTEMS FOR AS-BUILT PLANT ENGINEERING SERVICES ZF LASER SCANNER-5006i, 5010,5016, LEICA TOTAL STATION T09



SPECIALIZED ENGINEERING IN-PROCESS EXPERTISE SERVICES TO ENHANCE QUALITY, PRECISION, ACCURACY & PRODUCTIVITY ü AS-BUILT 3D LASER MAPPING OF PLANTS / AREAS As-is & As-Built detailing for Planning & Assessments ü DIGITAL PROFILE MAPPING In Turbine Overhauling, Maintenance & Installation ü DIMENSION CONTROLS Critical 3D Measurements, Alignments & Positioning Assistance ü REVERSE ENGINEERING & PART INSPECTION Manufacturing Design & Drawing Development

POINT CLOUD & PANORAMIC
WALK-THROUGH VIEW

PTX, PTS, LFD, TRUEVIEW q GA LAYOUT DRAWING

DWG, DXF, SAT q 3D PRIMITIVE MODEL q STEEL & CIVIL STRUCTURES q PIPING q PIPE SUPPORT q EQUIPMENT IMP, LFD, STEP, IGS, NAVISWORKS q 3D INTELLIGENT MODEL PDMS, SP3D, MICROSTATION, ETC

PLANT ENGINEERING SERVICES FOR AGING /OLD PLANTS AS-BUILT DETAILS GENERATION RETROFITTING q RENOVATION & MODERNIZATION q NEW EQUIPMENT ERECTION PLANNING q PLANT RELOCATION & ESTIMATION STUDIES q STRUCTURE STABILITY & RLA STUDIES q DRAWING UPDATES & AS-BUILT CHECKS Q WALK-THROUGH & TRAINING

Consultation and Design

We are solar and energy experts providing solutions for commercial, residential, and industrial establishments. We provide honest assessments to create long lasting relations with our clients. Through our engineering study, site survey, cost analysis, and creation of new construction plans or assessment of existing structures, we take pride in giving the best consultation experience and design. Composed of value-driven people, SIT is proud to say that its employees carry good characteristics and use the best instruments to deliver the right service.

Supply and Installation

One of the most important factors that we always consider to give the highest quality of service to our clients is safety and security. Our services assure that clients receive the value of doing business with us by assuring that they receive what they have expected in their purchases and their expectation of its installation. We in SIT guarantee that our people possess enough experience, have taken the right procedures of training, and are qualified to properly perform the installation disciplines of our products through the safest way possible.

Operation and Inspection



After safe installation procedures, our engineers also assure proper and expected performance of our solutions and demonstrate appropriate inspections and maintenance instructions of each system installed to verify that it remain fully functional.

Support and Maintenance

SIT gives our all for our customers to have the best post-purchase experience through our support and maintenance efforts. If you have burning questions, we are always prepared to answer your concerns and address issues that may arise so we can provide troubleshoot. It does not only further raise the quality our service, but it also creates a deeper sense of relationship with our Solar Alternative Energy Patron.

Our EPC services include:

Site surveying.

Designing solar power systems that best fits the site specified.

Preparing feasibility and cost-effectiveness studies.

Proposing the optimal solutions for our clients.

Supplying all the required project components and materials needed.

Installing the solar power system required.

Ensuring that the system works with maximum efficiency by testing and commissioning.

Provide the additional service of proposing maintenance plans.

Design Your Custom Solar Solution with SIT Power Solutions

At SIT Power Solutions, we take a personalized approach to solar. Whatever your commercial needs, we'll outline the best options for your solar energy system and help you optimize your energy investment dollars.

Want to know what going solar will do for you or have questions about the available incentives or implications of solar? Our team has answers. Whether you have property locally in INDIA AND MIDDLE EAST, or you have a project for us elsewhere, we're here to help. Looking for a solar contractor with commercial expertise? SIT or contact us to schedule a solar consultation!

SIT Power Solutions is a fully licensed, bonded, and insured solar contractor based in INDIA & MIDDLE EAST. We have over 3 years of experience in providing renewable energy solutions here in INDIA & MIDDLE EAST. and are fiercely committed to offering excellent service to our customers.

Cutting-Edge Solar Design & Implementation



Due to our continued attention to new and evolving technologies in the solar industry, we're able to offer our customers cutting-edge project design and implementation. Whether you're a home, farm, small business, or large business, we'll provide you with the best possible installation of your system.

Our knowledge and experience allows us to design and implement a wide range of solar energy systems, including grid-tied and off-grid residential systems, grid-tied solar and battery storage systems for large and small commercial customers, and a wide range of grid-tied solutions for schools and municipal buildings. Whatever you may have in mind for your solar project, it's probably something we can take on.

A Full-Service Renewable Energy Company

As a full-service renewable energy company, we can handle all aspects of your project, including necessary documentation for available incentives, permits and approvals, system design, engineering, and final system commissioning. We'll also provide continued service and support long after successful project completion.

Whether you want maximum return on investment for your commercial solar project or need reliable power far beyond the reach of the utility, we can provide the full spectrum of services for your renewable energy project. With SIT Power Solutions, you can expect absolute professionalism, technical expertise, and a commitment to total client satisfaction.

Trusted Expertise in Commercial Off-Grid Systems

The technical challenges and demanding environment of off-grid installations continue to be a specialty of SIT Power Solutions. We've been involved in a variety of commercial-scale projects — from large 750 kW systems to small water pumping installations — and have successfully designed and installed numerous off-grid systems in INDIA & MIDDLE EAST.

Residential Solar

If you're a homeowner in INDIA & MIDDLE EAST, you've probably heard about the benefits that a residential solar energy system can offer. In addition to helping offset your electricity bills, going solar offers an impressive return on investment and comes with a number of valuable tax incentives. Then there are the added benefits of greater energy independence and a reduced carbon footprint.



Because of SIT Power's high quality work and personalized approach to solar, we've become INDIA & Middle east trusted, local residential solar expert.

Industry-Leading Solar Design & Installation

Our top-quality craftsmanship has earned us a strong reputation throughout INDIA & MIDDLE EAST. With over 3 years of experience in the industry, we are able to offer our customers a diverse array of options for their residential systems. Whether you are considering standard grid-tied solar, a grid-tied system with battery storage, a ground mount system, or an off-grid system, we'll design an innovative solution that best suits your needs.

In business for over three years, we've nurtured close relationships with our manufacturers. This means we use best-in-class equipment with every solar installation, ensuring you get the most from your solar investment.

A Personalized Approach to Solar

We understand that every homeowner has unique needs when it comes to solar. Unlike many solar companies, we start every project with an on-site visit to assess your needs and listen to your goals. Then, we offer our expertise, presenting you with a variety of best-in-class options that are well suited for your home. We'll help you understand the pros and cons of every option so you can choose what works best for you. SIT Power Solutions: Going Solar Made Simple With SIT Power Solutions, making the switch to solar is simple. Having been in business for over 3 years, we understand the unique needs of India and Middle east homeowners. Our experts will walk you through the entire process of going solar, from the initial on-site visit, to installation, to continuing support after installation. We also offer full support for financing and available rebates.

Considering solar for your India & Middle east home?

We will engage in all relevant consultation processes with Government, State agencies and other policy-makers. We will build our relationship with Government Departments, the solar system and MEPs through briefings, we will monitor and co-ordinate the Society's response issues. We will support the Committee resource in providing timely and balanced contributions to policy and law reform debates. We will manage the Society's engagement with the authorities on implementation and we will issue guidance to the profession.

We will progress the conveyancing project. We will progress the delivery of an independent report on the challenges and opportunities facing sole practitioners and small firms.



We will explore the provision of India & Middle East-based supports for those colleagues who need professional help or advice with difficult or distressing situations.

We will continue to build content on the Society's knowledge management system for Society submissions, legal advices, policy positions and research.

We will ensure compliance with the Society's obligations.

We will conduct relevant surveys and consultation processes with the profession in support of key policy decisions and in order to inform the Society's thought-processes.

We will provide a research and policy development resource for the Co-ordination Committee.

We will continue to build alliances and relationships with professional bodies, civil society groups and public representatives to progress our reform objectives.

Higher efficiency and better performance

The cells and modules are technologically advanced and result with higher efficiency. Photovoltaic glass design improves oblique irradiance performance and enhances module yield in low-light and medium-angle-light condition.

Higher durability and Quality Insurance

Maximum performance is guaranteed by the manufacturer for 10 years. Through the PV Module Quality Insurance the warranty guarantees 80% power output for 25 years, covered by contracts with international insurance companies. The products are certified to withstand high pressure of wind and snow.

Tested products and control elements

The modules are tested for resistance to atmospheric impacts (Salt-mist corrosion test, Ammonia resistance test), possible loss of output power (PID) and Carbon footprint (assessment by TÜV Nord). Junction box and by-pass diodes protect the modules from overheating and "hot spot effect".

Easy installation

The modules are easy to install and compatible with other parts of the equipment.

Customized solutions

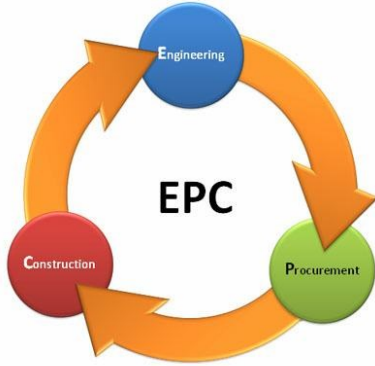
The production line enables changes in product outputs based on different input variables and, therefore, easy customization for the individual orders



EPC CONTRACTING

(Engineering, Procurement, Construction)

SIT ARABIAN recognizes that EPC projects must be executed in strict accordance with the requirements and specifications defined within the clients detailed project scope of work and typically with the principles and concept of ISO 9001/14001/18001 standards. The success of SIT ARABIA has generally been achieved through adherence to a fundamental objective, that is, to provide our clients with a comprehensive range of multi-discipline Engineering, Procurement and Construction service to the highest quality within schedule and budget. The project team being a dedicated task force assembled utilizing experienced personnel with proven capabilities from SIT ARABIAN and any appointed sub-contractors



and vendors. Through all phases of project execution, SIT ARABIAN place strong emphasis on its project management skills and in maintaining a close working relationship with our clients. BC strongly believes that the project personnel must be properly motivated to execute the work. The initial activities will usually begin with a team building process to provide team understanding of the project requirements and to align both SIT ARABIA and client personnel with project objectives. Team members would jointly plan project methodologies, work process interfaces, and technical strategy to ensure consistency in strict adherence to client requirements. SIT ARABIAN has a number of computer aided tools which significantly enhance the total quality of the project works. In particular, the SIT ARABIAN corporate data communications network is of considerable value, enabling transfer of documentation between all geographic office locations, providing a global project document management system. SIT ARABIAN is committed to continuously improving the quality of work through customer interaction, leadership, and team work and work process improvement. We have instituted a number of initiatives in waste elimination, value engineering, and continuous improvement which form the basis of our total quality management program. Our vision is to achieve sustainable market leadership in every business the SIT ARABIAN operates. The Group aims to be the preferred business partner by engaging in mutually profitable and rewarding relationships, in the world wide by consolidating its position as a holding company, active diversification, hedging risk. We are dedicated to helping you by leveraging latest technology to provide cutting-edge solutions that meet your specific business needs and help you gain market share, increase efficiency, enhance productivity, reduce operating costs, and boost client's satisfaction. Because SIT ARABIAN is committed to developing long lasting relationships with our client's, we know that our success is based directly on your success.




 Bahrain / United Kingdom / India
 البحرين / المملكة المتحدة / الهند





وزارة الاستثمار
Ministry of Investment

ترخيص استثمار خدمي
Services Investment License

الرقم الموحد (7025576328)
رقم المنشأة (666825)
رقم الترخيص (122104212107615)
تاريخ الإصدار تاريخ الإنتهاء
1442/12/01 هـ 1444/11/28 هـ
2021/07/11 م 2023/06/17 م
156237



المركز الرئيسي

حالة الترخيص: تجديد

اسم الترخيص شركة صديقي انفراتيك العربية المحدودة
الكيان القانوني شركة ذات مسؤولية محدودة

رأس المال (500,000) ريال سعودي

الموقع الخبر

ص.ب 32241 الرمز البريدي 32251 الهاتف +966 966666563084888 الفاكس +966

اسم صاحب الترخيص اسم صاحب/ أصحاب الترخيص رقم المستثمر الجنسية الحصة
شركة صديقي انفراتيك ذ م م شركة البحرين 666826 100%
مغلطة

SIDDIQUI INFRA TECH CO WLL

النشاط:

- 331400: إصلاح المعدات الكهربائية
- 332011: تركيب الأجهزة الصناعية في المنشآت الصناعية
- 332012: تركيب معدات التحكم في العمليات الصناعية
- 332013: تفكيك كامل للآلات والمعدات الكبيرة
- 332022: تركيب الحواسيب المركزية
- 332032: تركيب تجهيزات الآلات والمعدات
- 332034: تركيب معدات التحكم في التلوث
- 410010: الإنشاءات العامة للمباني السكنية
- 410021: الإنشاءات العامة للمباني الغير السكنية ، يشمل (المدارس ، المستشفيات، الفنادق ... الخ)



عنه خالد علي الشدي
تاريخ التوقيع : 1443/11/06



وزارة الاستثمار
Ministry of Investment
الهيئة العامة للتأجير

تاريخ الطباعة 1443/11/07 هـ وزير الاستثمار خالد بن عبدالعزيز الفالح

4 - 1 يمكنك التحقق من صحة صلاحية الشهادة عبر زيارة الرابط
<https://eservices.sagya.gov.sa/verify> على موقع وزارة الاستثمار.



SIT GROUP
Bahrain / United Kingdom / India
البحرين / المملكة المتحدة / الهند





وزارة الاستثمار
Ministry of Investment

ترخيص استثمار خدمي
Services Investment License

الرقم الموحد (7025576328)
رقم المنشأة (666825)
رقم الترخيص (122104212107615)
تاريخ الإصدار تاريخ الإنتهاء
1442/12/01 م 1444/11/28 م
2021/07/11 م 2023/06/17 م



المركز الرئيسي

حالة الترخيص: تجديد

اسم الترخيص شركة صديقي انفراتيك العربية المحدودة
الكيان القانوني شركة ذات مسؤولية محدودة

الموقع الخبر رأس المال (500,000) ريال سعودي

ص.ب 32241 الرمز البريدي 32251 الهاتف +966 966966563084888 الفاكس +966

- 410022: إنشاء المطارات ومرافقها
- 410023: الإنشاءات العامة للمباني الحكومية
- 410030: إنشاءات المباني الجامزة في المواقع
- 410040: ترميمات المباني السكنية والغير سكنية
- 410041: ترميمات المباني (التاريخية والتراثية والأثرية)
- 432111: تعديد الاسلاك الكهربائية
- 432112: تعديد اسلاك الاتصالات
- 432113: تعديدات الشبكات
- 432121: تركيب وتعديد شبكات التلفزيون والستلايت
- 432122: تركيب وتعديد شبكات الكمبيوتر والاتصالات
- 432132: تركيب وصيانة أجهزة ومعدات الإنذار من الحريق
- 432134: تركيب وصيانة الأجهزة الأمنية
- 432920: تركيب وإصلاح وصيانة الابواب الأوتوماتيكية
- 432930: تركيب وإصلاح وصيانة مانع الصواعق
- 432940: تركيب وإصلاح وصيانة أنظمة التنظيف المركزية

عنه خالد علي الشدي
تاريخ التوقيع: 1443/11/06



وزارة الاستثمار
Ministry of Investment
الهيئة العامة للاستثمار

تاريخ الطباعة 1443/11/07 م وزير الاستثمار خالد بن عبدالعزيز الفالح

4 - 2 يمكنك التحقق من صحة صلاحية الشهادة عبر زيارة الرابط
<https://eservices.sagia.gov.sa/verify> على موقع وزارة الاستثمار.



SIT GROUP
Bahrain / United Kingdom / India
البحرين / المملكة المتحدة / الهند





وزارة الاستثمار
Ministry of Investment

ترخيص استثمار خدمي
Services Investment License

الرقم الموحد (7025576328)
رقم المنشأة (666825)
رقم الترخيص (122104212107615)
تاريخ الإصدار تاريخ الإنتهاء
1442/12/01 هـ 1444/11/28 هـ
2021/07/11 م 2023/06/17 م



المركز الرئيسي

حالة الترخيص: تجديد

اسم الترخيص شركة صديقي انفراتيك العربية المحدودة
الكيان القانوني شركة ذات مسؤولية محدودة

رأس المال (500,000) ريال سعودي

الموقع الخبر

الهاتف +966 32251 32241

الرمز البريدي 32251

الفاكس +966966563084888

432963: تركيب وصيانة أجهزة ومعدات الإطفاء

439011: أعمال تركيب الطابوق

439012: أعمال تركيب المصخور

439020: أعمال تركيب السقالات

439030: إنشاء حمامات السباحة

439050: تأجير معدات التشييد والبناء مع مشغل

439061: تركيب وصيانة الوحدات المسبقة الشد لإجهادات الخرسانة

582001: نشر البرامج الجاهزة

582002: أنظمة التشغيل

582003: ألعاب الحاسوب

602034: تشغيل خدمة الربط العلوي بالأقمار الصناعية لأغراض توزيع المحتوى المرئي والمسموع

620101: تحليل النظم

620102: تصميم وبرمجة البرمجيات الخاصة

620106: تقنيات الروبوت

620111: تطوير التطبيقات

عنه خالد علي الشدي
تاريخ التوقيع: 1443/11/06



وزارة الاستثمار
Ministry of Investment
الإدارة العامة للتأجير

تاريخ الطباعة 1443/11/07 هـ وزير الاستثمار خالد بن عبدالعزيز الفالح

4 - 3 يمكنك التحقق من صحة صلاحية الشهادة عبر زيارة الرابط
<https://eservices.sagia.gov.sa/verify> على موقع وزارة الاستثمار.



SIT GROUP
Bahrain / United Kingdom / India
البحرين / المملكة المتحدة / الهند





وزارة الاستثمار
Ministry of Investment

ترخيص استثمار خدمي
Services Investment License

الرقم الموحد (7025576328)
رقم المنشأة (666825)
رقم الترخيص (122104212107615)
تاريخ الإصدار تاريخ الإنتهاء
1442/12/01 هـ 1444/11/28 هـ
2021/07/11 م 2023/06/17 م
156237



المركز الرئيسي

حالة الترخيص: تجديد

اسم الترخيص شركة صديقي انفراتيك العربية المحدودة
الكيان القانوني شركة ذات مسؤولية محدودة

الموقع الخبر رأس المال (500,000) ريال سعودي

ص.ب 32241 الرمز البريدي 32251 الهاتف +966 966966563084888 الفاكس +966

620112: تطوير الألعاب الإلكترونية

620115: حلول التقنية المالية

631113: تقنيات البيانات الضخمة وعلم وتحليل البيانات

631121: إقامة البنية الأساسية لاستضافة المواقع على الشبكة وخدمات تجهيز البيانات والأنشطة المتعلقة بذلك

639100: أنشطة وكالات الأنباء ، يشمل أنشطة شركات الأنباء ووكالات الأنباء التي تقم الأخبار والصور والرسائل الإخبارية إلى وسائط الإعلام

952100: إصلاح الأجهزة الإلكترونية الاستهلاكية



عنه خالد علي الشدي
تاريخ التوقيع : 1443/11/06



وزارة الاستثمار
Ministry of Investment
الإدارة العامة للترخيص

تاريخ الطباعة 1443/11/07 هـ وزير الاستثمار خالد بن عبدالعزيز الفالح

4 - 4 يمكنك التحقق من صحة وملاحية الشهادة عبر زيارة الرابط
<https://eservices.sagia.gov.sa/verify> على موقع وزارة الاستثمار.



SIT GROUP
Bahrain / United Kingdom / India
البحرين / المملكة المتحدة / الهند





وزارة التجارة
Ministry of Commerce

٢٠٥١٢٣٧٠٥٩

الرقم:

١٤٤٣/٠١/٢٣ هـ

التاريخ:

شهادة تسجيل الشركة

الرقم الموحد للمنشأة: ٧٠٢٥٥٧٦٣٢٨ الاسم التجاري للشركة: شركة صديقي انفراتيك العربية المحدودة شركة الشخص الواحد
نوعها: محدودة أجنبية جنسيتها: سعودي
مدة الشركة: ٩٩ سنة تبدأ من: ١٤٤٣/٠١/٢٣ هـ وتنتهي في: ١٥٤٥/٠٢/٠٧ هـ
مركزها الرئيسي: الخبر الغربية الشمالية شارع الملك سعود بن عبدالعزيز
ص ب: ٣٢٢٤١ الرمز البريدي: ٣٢٢٥١ هاتف: ٥٦٣٠٨٤٨٨٨
النشاط: للاطلاع على بيانات الأنشطة الرجاء مسح الرمز التجاري
رأس المال: ٥٠٠٠٠٠ ريال سعودي
المديرون: ١ شيخ سعيد
٢
٣
٤
٥
٦
٧
٨
٩
١٠
١١
١٢
١٣
١٤
١٥
١٦
١٧

سلطات المدير/المديرون: حسب ما نص عليه عقد الشركة

يشهد مكتب السجل التجاري بمدينة: الخبر بأنه تم تسجيل الشركة المذكورة أعلاه بمدينة: الخبر
وتنتهي صلاحية الشهادة في: ١٤٤٥/٠١/٢٣ هـ بموجب الإيصال رقم: ٨٤٥٩٩٥٧٠ وتاريخ: ١٤٤٣/٠١/٢٣ هـ

مدير السجل التجاري للشركات: عبد المحسن بن ابراهيم الحماد

التوقيع:



يمكنك التحقق من صحة هذه الشهادة بالدخول على <http://v.mci.gov.sa> To Verify the information of this certificate visit



Membership Certificate - شهادة الاشتراك



The Unified Number: 7025576328

الرقم الموحد للمنشأة: 7025576328

Classification : Second

الدرجة : الثانية

Date of Issue : 24/07/2022

تاريخ الاصدار : 25/12/1443

Asharqia Chamber Certifies that :

تشهد الغرفة التجارية الصناعية بالمنطقة الشرقية بأن :

SIT ARABIAN CONTRACTING COMPANY LIMITED

شركة صديقي انفراتيك العربية المحدودة شركة الشخص الواحد

Membership No : 329109

رقم الاشتراك : 329109

Registered with Chamber since : 31/08/2021 and

مستركة في الغرفة منذ : 23/01/1443

the certificate expires on : 10/08/2023

وينتهي سريان هذه الشهادة في : 23/01/1445

32241, الخبر, 32251

32241, الخبر, 32251



يمكنك التحقق من صحة هذه الشهادة
<https://www.chamber.org.sa/VerifyCert>



SF-MEMBD-04 Rev. 10 Issued 01 MAR. 2021





رخصة نشاط تجاري Commercial Activity Licence

شركة صديقي انفرا تيك العربية المحدودة شركة الشخص الواحد

License Expiry Date تاريخ نفاية الترخيص License Number رقم الرخصة الوحد

1444/04/12

43047950659

Owner's Name اسم المالك

شركة صديقي انفرا تيك العربية المحدودة شركة الشخص الواحد

Owner's ID رقم هوية المالك

2051237059

ISIC Classification التصنيف الصناعي القياسي الدولي (نشاط ايزك)

ترميمات المباني السكنية والغير سكنية

Detailed Activity النشاط التفصيلي

شركة مقاولات عامة

Sub-Municipality البلدية Municipality الأمانة

بلدية محافظة الخبر

أمانة المنطقة الشرقية

Street الشارع District الحي

الملك سعود بن عبدالعزيز

حي الخبر الشمالية

Shop's Sign's Area مساحة اللوحات الإجهالية Shop's Total Area مساحة المحل الإجهالية

0 متر مربع اعلاني | 2 متر مربع ارشادي

96 متر مربع



Permit Expiry Date تاريخ انتهاء التصريح Code QR للاستدانة السريع Permit Number رقم التصريح Permits للتطلاع على الأنشطة للأضحية وتفاصيل الرخصة يرجى مسح رمز الاستدانة السريع للتصريح التصاريح



مركز الدعم الفني
940

Balady_cs



saudimomra

www.balady.gov.sa



SIT GROUP
Bahrain / United Kingdom / India
البحرين / المملكة المتحدة / الهند





تاريخ الإصدار: 2021/09/05
الرقم المميز: 3110187037



الهيئة العامة للزكاة والدخل
General Authority of Zakat & Tax



شهادة تسجيل في ضريبة القيمة المضافة VAT Registration Certificate

تشهد الهيئة العامة للزكاة والدخل بأن المكلّف أدناه مسجل في ضريبة القيمة المضافة بتاريخ 2021/09/05

Hereby, The General Authority of Zakat & Tax (GAZT) certifies that the taxpayer below is VAT registered on 05/09/2021

Taxpayer Name:	شركة صديقي انفراتيك العربية المحدودة شركة الشخص الواحد	اسم المكلّف:
VAT Registration Number:	311018703700003	رقم التسجيل الضريبي:
Effective Registration Date:	2021/10/01	تاريخ نفاذ التسجيل:
Taxpayer Address:	الخير، الشمالية، شارع الملك سعود بن عبدالعزيز، 32251	عنوان المكلّف:



كمكلّف مسجل في ضريبة القيمة المضافة، لا يجوز لك تحصيل ضريبة القيمة المضافة من عملائك قبل تاريخ نفاذ التسجيل بالضريبة. في حال تبين غير ذلك، ستقوم الهيئة العامة للزكاة والدخل بتنفيذ الغرامات المستحقة

هذه الوثيقة مرسلة من النظام الآلي ولا تحتاج إلى توقيع
- الهيئة العامة للزكاة والدخل -



SIT GROUP
Bahrain / United Kingdom / India
البحرين / المملكة المتحدة / الهند





تاريخ الإصدار: 2021/09/05
الرقم المميز: 3110187037



الهيئة العامة للزكاة والدخل
General Authority of Zakat & Tax



اسم المكلّف:	شركة صديقي انفراتيك العربية المحدودة شركة الشخص الواحد
رقم السجل/الرخصة/العقد:	2051237059
الفترة الضريبية:	ربع سنوي-Quarterly
تاريخ استحقاق أول إقرار ضريبي:	2022/01/31
First Filing due date:	



كمكلف مسجل في ضريبة القيمة المضافة، لا يجوز لك تحصيل ضريبة القيمة المضافة من عملائك قبل تاريخ نفاذ التسجيل بالضريبة. في حال تبين غير ذلك، ستقوم الهيئة العامة للزكاة والدخل بتنفيذ الغرامات المستحقة

**هذه الوثيقة مرسلّة من النظام الآلي ولا تحتاج إلى توقيع
- الهيئة العامة للزكاة والدخل -**





رقم الشهادة: ١٠٤٢١٠٠٠١٦٣١١٣٠
التاريخ: ١٤٤٣/١/٢٥ هـ
الرقم المميز: ٣١١٠١٨٧٠٣٧



الهيئة العامة للزكاة والدخل
General Authority of Zakat & Tax

المملكة العربية السعودية
الهيئة العامة للزكاة والدخل
General Authority of Zakat & Tax

شهادة CERTIFICATE تسجيل

تشهد الهيئة العامة للزكاة والدخل بأن المكلف / شركة صديقي انفراتيك العربية
المحدودة شركة الشخص الواحد

شركة رقم ٧٠٢٥٥٧٦٣٢٨ وسجل تجاري / رخصة / عقد رقم ٢٠٥١٢٣٧٠٥٩

مسجل لديها بالرقم المميز ٣١١٠١٨٧٠٣٧ بتاريخ ١٤٤٣/١/٢٣ هـ.

وقد منح هذه الشهادة لتمكينه من إنهاء جميع معاملاته ما عدا صرف مستحقاته النهائية
عن العقود .

يسري مفعول هذه الشهادة حتى تاريخ ١٤٤٤/١/٠٩ هـ الموافق ٢٠٢٣/١/٠٢ م .

(التاسع من جمادى الثاني ألف و أربعمئة و أربعة و أربعون هجري)



الختم الرسمي

هذه الوثيقة مستخرجة من النظام الآلي ولا تحتاج إلى توقيع
لا يعتد بهذه الشهادة إلا بعد التحقق من موقع الهيئة www.gazt.gov.sa



SIT GROUP
Bahrain / United Kingdom / India
البحرين / المملكة المتحدة / الهند





CERTIFICATE OF REGISTRATION

INTERCERT hereby certifies that the Quality Management System of

SIT Arabian Contracting Co. Ltd.

P.O BOX # 34446, ALKHOBAR-31952, KSA, Al Khobar, Kingdom of Saudi Arabia

Has been successfully assessed as per the requirements of

ISO 9001:2015

For the scope of

General Contracting of Civil, Electrical, Mechanical & IT Works, Fire Protection & Security System.

Initial Certification Date : February 16, 2022
Certificate Issue Date : February 16, 2022
Surveillance Validity Date : February 15, 2023
Recertification Date : February 15, 2025

Registration Number: IC-QM-2202108



Issued on behalf of InterCert
Head - Certifications



MSCB-121

The validity of this certificate can be verified at www.intercert.com or through email at info@intercert.com. This certificate is the property of INTERCERT INC, 2001 Timberloch Place - Suite 500, The Woodlands, Texas 77380, United States and must be returned on request.



SIT GROUP
Bahrain / United Kingdom / India
البحرين / المملكة المتحدة / الهند





CERTIFICATE OF REGISTRATION

INTERCERT hereby certifies that the Environmental Management System of

SIT Arabian Contracting Co. Ltd.

P.O BOX # 34446, ALKHOBAR-31952, KSA, Al Khobar, Kingdom of Saudi Arabia

Has been successfully assessed as per the requirements of

ISO 14001:2015

For the scope of

General Contracting of Civil, Electrical, Mechanical & IT Works, Fire Protection & Security System.

Initial Certification Date : February 16, 2022
Certificate Issue Date : February 16, 2022
Surveillance Validity Date : February 15, 2023
Recertification Date : February 15, 2025

Registration Number: IC-EM-2202109



Issued on behalf of InterCert
Head - Certifications



MSCB-121

The validity of this certificate can be verified at www.intercert.com or through email at info@intercert.com. This certificate is the property of INTERCERT INC, 2001 Timberloch Place - Suite 500, The Woodlands, Texas 77380, United States and must be returned on request.



SIT GROUP
Bahrain / United Kingdom / India
البحرين / المملكة المتحدة / الهند





CERTIFICATE OF REGISTRATION

INTERCERT hereby certifies that the Occupational Health & Safety Management System of

SIT Arabian Contracting Co. Ltd.

P.O BOX # 34446, ALKHOBAR-31952, KSA, Al Khobar, Kingdom of Saudi Arabia

Has been successfully assessed as per the requirements of

ISO 45001:2018

For the scope of

General Contracting of Civil, Electrical, Mechanical & IT Works, Fire Protection & Security System.

Initial Certification Date : February 16, 2022
Certificate Issue Date : February 16, 2022
Surveillance Validity Date : February 15, 2023
Recertification Date : February 15, 2025

Registration Number: IC-OS-2202110



Issued on behalf of InterCert
Head - Certifications



MSCB-121

The validity of this certificate can be verified at www.intercert.com or through email at info@intercert.com. This certificate is the property of INTERCERT INC, 2001 Timberloch Place - Suite 500, The Woodlands, Texas 77380, United States and must be returned on request.



SIT GROUP
Bahrain / United Kingdom / India
البحرين / المملكة المتحدة / الهند



Management Members

Since establishment in 2005, our mission at SIT Group has been to services, supply, construction & IT Solutions sector in Saudi Arabia. Through continuous innovation and dedication to providing only the highest quality products and service, SIT Group is today a major market contributor for turnkey construction & IT Solutions in the Kingdom and across the surrounding region.

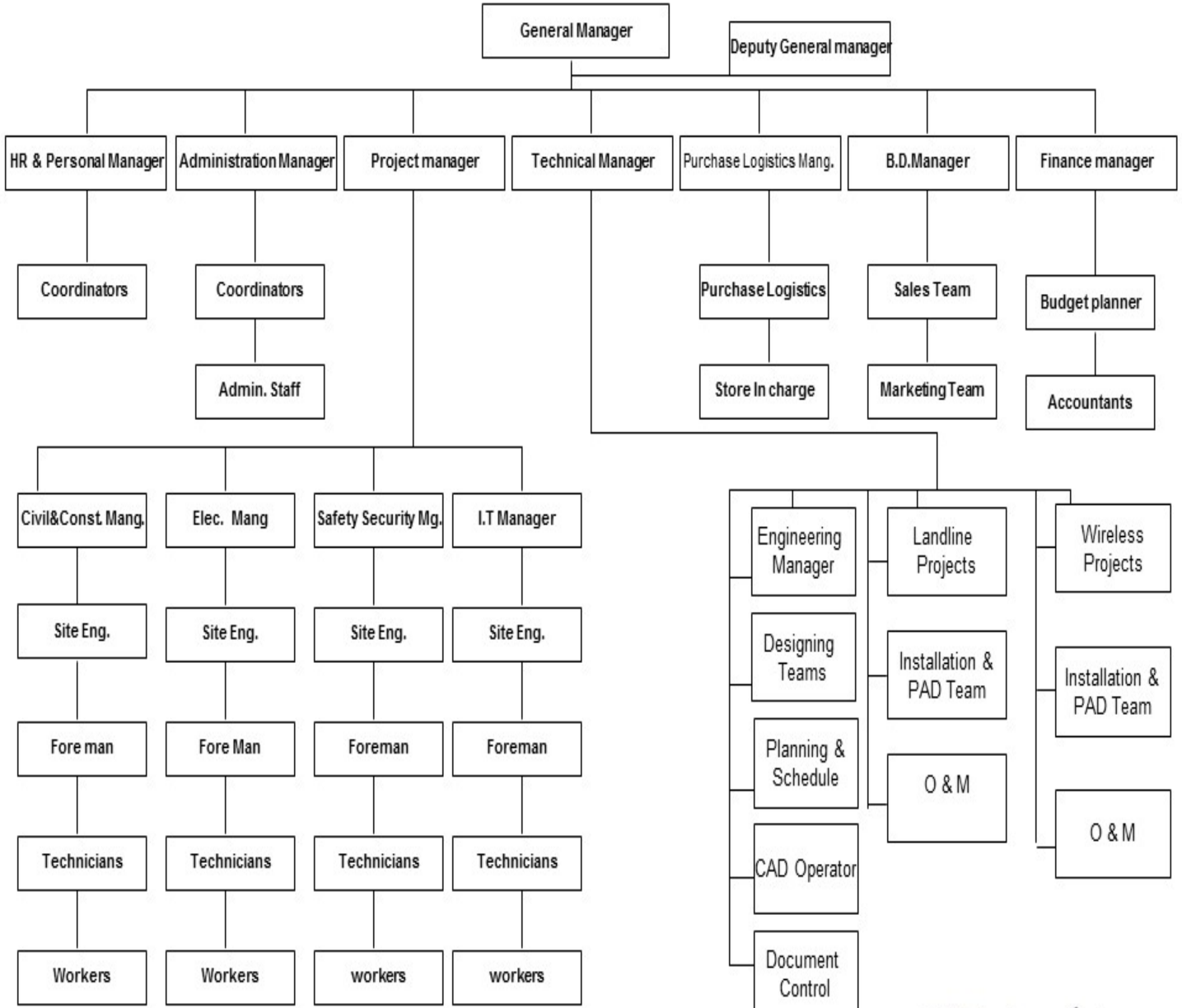
And we are committed to maintaining our position as a leading as Contractor and Consultation with services. Which is why we continuously invest in the latest technologies. Our innovation allows us to offer our clients in the oil and gas industry, unique customizable solutions that enhance productivity and boost profitability, Our operations are further strengthened by the selection of highly skilled and qualified best-in-class personnel ranging across all capabilities and disciplines. We maintain a pool of core long-term customers as a result of our conscious investment in nurturing, training, developing and honing the skills of our team of engineers and specialists.

Warm regards.

SIT Group Management.



ORGANIZATION CHART



KEY PERSONAL PROFILE

"SIT general contractor for several key projects during each of those years. I have always been able to rely on SIT to deliver high quality construction, on schedule, and on budget, with a strong emphasis on safety. SIT is one of the prime contractor in KSA, able to cover multiple geographic areas, they have always been flexible enough to meet any changing needs. They are able to handle all types of projects, from small remodel upgrades to complete new builds. SIT organization will enable them to operate even more efficiently in the future."

Shaik Sayeed.
General Manager

"The SIT edge begins and ends with their people. They have recently delivered on a Several Fuel Stations project for us, they were very personable throughout the project. They stand behind their work."

Ali Baibani
COO

"SIT has been a contractor since the early 2007. They have been able to exceed expectations while working on some of the most challenging projects. Whether it was dealing with rock, high water, non-conventional architecture, and weather or challenging schedules, SIT has been able to meet these challenges head on and work through them with their hard work and ingenuity. SIT is a very reliable petroleum contractor. They know this business inside and out. I know when they are working on one of my projects it's getting done right. Their team is capable, competent, and just a pleasure to work with."

Mohiuddin Ali Siddiqui
Operation Manager



MANPOWER & TECHNICAL STAFF EXPERIENCE



FUNCTION / JOB	NUM. OF STAFF	
	TOTAL	SAUDI
PROJECT MANAGEMENT & ADMIN.		
GENERAL MANAGER	1	
PROJECT MANAGER	7	
ADMINISTRATIVE STAFF / DOC. CONTROL	7	9
TECHNICAL MANAGER	7	
PROCUREMENT & MATERIALS MANAGER	7	2
START-UP & COMMISSIONING MANAGER	7	
SAFETY MANAGER	10	8
QUALITY CONTROL MANAGER	1	
PROJECT CONTROLS MANAGER	1	
PROJECT ENGINEERS	14	
COST ENGINEERS	7	
ESTIMATORS	4	
SCHEDULES / PLANNERS	1	

ENGINEERS & CONSTRUCTION FIELD PERSONNEL	TOTAL		SAUDI
	TOTAL	SAUDI	
CIVIL ENGINEERS	18		
MECHANICAL ENGINEERS	2		
ELECTRICAL ENGINEERS	4		
QA/QC ENGINEER	1		
CONTROL SYSTEM ENGINEERS	1		
SUPERINTENDENT (PIPING / MECHANICAL)	2		
SUPERINTENDENT (CIVIL)	12	10	
SUPERINTENDENT (ELECT. / INSTRUMENT)	4	2	
FOREMEN / SUPR. (PIPING / MECHANICAL)	2	3	
FOREMEN / SUPR. (CIVIL)	10	12	
FOREMEN / SUPR. (ELECT. / INSTRUMENT)	4	4	

DEPARTMENT / JOB	NUM. OF STAFF	
	TOTAL	SAUDI
CRAFTSMEN / SKILLED LABORS / OPERATORS		
MASONS	150	
CARPENTERS	119	4
SURVEYORS	8	3
IRON WORKERS	8	2
PIPE FITTERS	6	
MECHANICAL TECHNICIANS	12	3
ELECT. TECHNICIANS (LV/HV)	15	2
STEEL FIXERS	15	
PAINTERS	20	
SCAFFOLDERS	12	
SAND BLASTERS	18	
WELDERS STRUCTURAL	15	
WELDERS PIPING	10	
PIPE FABRICATORS	15	
ELECTRICIANS (LV/HV)	23	
CERTIFIED CABLE SPLICERS	12	
NDT TECHNICIANS	12	
LIGHT CRANE OPERATORS	12	
HEAVY CRANE OPERATORS	6	
BULDOZER OPERATORS	11	
GRADER OPERATORS	10	
TRUCK DRIVERS	25	6



PROJECT NAME	MAKE NAME	YEAR MAKE	CURRENT STATUS
TABUK UNIVERSITY	TRUCK CRANE CAPACITY 25 TON FMC LINK BELT		WORKING
TABUK TRANSPORT	TRUCK CRANE CAPACITY TG-550E 55 TON TADANO	2003	UNDER MAINTENANCE
UMLOJ GIRLS COLLEGE	BACKLOADER EXCAVATOR JCB 3CX	2006	WORKING
SHARMA RESORT PROJECT	BACKLOADER CATERPILLAR EXCAVATOR 428	1989	WORKING
TABUK TRANSPORT	KOMATSU EXCAVATOR PC-200	1989	UNDER MAINTENANCE
UMLOJ GIRLS COLLEGE	KOMATSU EXCAVATOR PC-210	1990	WORKING
UMLOJ GIRLS COLLEGE	SHOVEL CATERPILLAR 930	2004	WORKING
SHARMA RESORT	SHOVEL CATERPILLAR 950	1979	WORKING
UMLOJ GENERAL HOSPITAL	SHOVEL CATERPILLAR 938G	2000	WORKING
UMLOJ GIRLS COLLEGE	SHOVEL CATERPILLAR 950	1977	WORKING
TABUK UNIVERSITY	SHOVEL WHEEL LOADER CATERPILLAR 938G	2003	WORKING
TABUK TRANSPORT	SHOVEL CATERPILLAR 950F	2000	UNDER MAINTENANCE
UMLOJ GIRLS COLLEGE	SHOVEL KOMATSU W90	1980	UNDER MAINTENANCE
KHYBAR GENERAL HOSPITAL	JCB 540-170 TELEHANDLER FORK LIFT 17.41 MTRS	2006	WORKING
UMLOJ MUNICIPALITY	JCB 540-170 TELEHANDLER FORK LIFT 17.41 MTRS	2005	WORKING
UMLOJ GIRLS COLLEGE	JCB 540-170 TELEHANDLER FORK LIFT 17.41 MTRS	2006	WORKING
TABUK UNIVERSITY	JCB 540-170 TELEHANDLER FORK LIFT 17.41 MTRS	2005	WORKING
TABUK WORKSHOP	JCB 530-120 TELEHANDLER FORK LIFT	1998	UNDER MAINTENANCE
SHARMA RESORT	SKID LOADER 216B	2008	WORKING
TABUK UNIVERSITY	SKID LOADER 216B		WORKING
DUBA PROJECT	SKID LOADER 216B		WORKING
UMLOJ GIRLS COLLEGE	SKID LOADER 216B		WORKING
UMLOJ GIRLS COLLEGE	SKID LOADER 216B	2008	WORKING
UMLOJ GIRLS COLLEGE	ROLLER COMPACTOR BW-120 DRIVER BOMAG	1984	WORKING
ASTRA FARMS (QUAIL PROJECT)	DUMPER		WORKING
SHARMA RESORT	ROLLER COMPACTOR BW-120 DRIVER BOMAG	1998	UNDER MAINTENANCE
SHARMA RESORT	ROLLER COMPACTOR MICNELINO DRIVER DTV-25		UNDER MAINTENANCE
MAIN STORES	FORKLIFT GASOLINE		WORKING

KEY MACHINERY & EQUIPMENT



LIST OF MAJOR CLIENTS

Sno.	Client name	Client Industry	Contact details & Address
1	United fuel Company (ENOC)	Petrol Station	King Abdullah St. PO BOX (2501) Al-Khobar 31952
2	Khonaini Int'l Co.	Housing Development	2601, Al-Jubail 35514 (013) 362-3524
3	Gulf Business Network Group	Oil & Gas	Tel: 013 845 7710 Dammam
4	Al-Rowad	Plastic	2nd Industrial City Al-Riyadh P.O BOX 29452
5	Petrokemya	Chemical Engineering	Al-Jubail 013 358 7000
5	Air Liquid	Oil & Gas	Dammam 013 808 2126
6	Al-Fanar	Power distribution & Control	P.O Box 35388 Al-Jubail 31961 Tel: 13 3418777
7	Tasnee	Petrochemical	Al Jubail 31961, P.O.Box 35579. Tel.: 0096613 358 2000
8	Johnson Control	Building Control	Madina road Jeddah 15019 Tel: 920003588
9	Gulf Contracting Co.	Oil & Gas	Coastal High way Dammam 31421 P.O Box895
10	Aramco	Oil & Gas	North admin building, Dhahran 31311
11	KJO Excel Company	Tanks dismantle	Saudi Arabia
12	Sabic	Mechanical	P.O. Box 5101 Riyadh 11422 Tel: +966112258000
13	Sec	Electrical	Saudi Arabia
14	UIPS	PLANT TURN KEY FARBI	Saudi Arabia
15	UIPS	SDC PLANT	Saudi Arabia
16	PMU	IP MONITERS	Saudi Arabia
17	GISCO	FA&FF SYSTEM	Saudi Arabia
18	MASAH Company	Civil	Saudi Arabia
19	MASAFI Group	Civil and electrical	Saudi Arabia
20	Arkan steel factory	Fabrication	Saudi Arabia



EXHIBIT "A" PRIMARY CONTRACTOR WORK EXPERIENCE

ON GOING PROJECTS-2019-2022

	CLIENTS/PROJECTS DESCRIPTIONS	LOCATION	CLIENTS
1	ZAMIL-KAAB-ERECTION PROJECT	DAHRAN-AIRBASE	KAAB
2	ZAMIL-BCI-ERECTION PROJECT	JUBAIL	BCI-Private Indst
3	SAUDI-ARAMCO-SAFANIYA OME-KIRBY BLDG	SAFANIYA-SA	Saudi Aramco
4	DISMENTLE OF ACGC-KAAB STEEL BLDG	DAHARAN-AIRBASE	KAAB
5	RC-SAHEL FUELS STATION-CONSTRUCTION	RC-JUBAIL	TMC-RC
6	SAHEL FILLING SAND FUEL STATIONS	TMC-Eastern region	Private Fuel station
7	SWCC-SAUDI FAL MT-STATION	Shayba-SWCC	SWCC-Saudi fal
8	DTC-ERECTION STEEL BLDG	3rd Industrial area	Private factory
9	HADEED-SCRAPER CARS SERVICES	JUBAIL	SABIC-HADEED
10	Replacement of OHTL-230/115KV	AL-HASSA-SRO	SRO.
11	AMS-KANOO-YANPET	YANBU	SABIC
12	POLO PROJECT	YAMBO	PLANT
13	SURFACE DETERGENTS PLANT	JUBAIL	PLANT
14			

COMPLETED PROJECTS

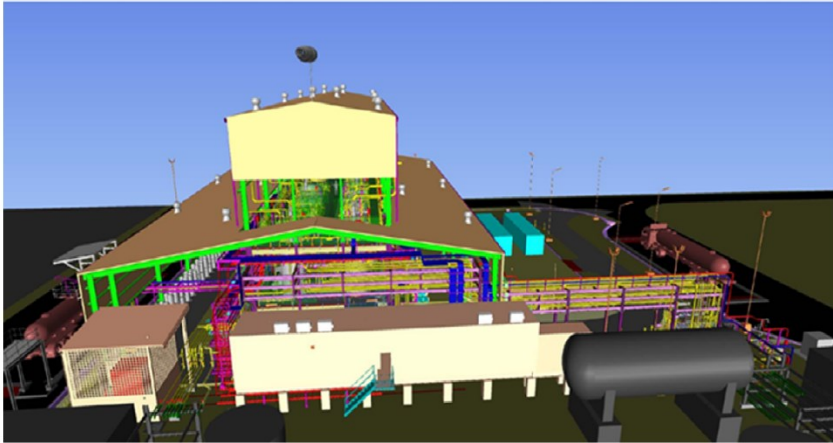
1	Erection of Steel structure-Pipe racks	ABQ-2-GOSP	SAUDI ARAMCO
2	Erection of Steel structure-Pipe racks	UTH-GOSP-11	SAUDI ARAMCO
3	Erection of Steel structure-Pipe racks	SHEDGUM-GOSP	SAUDI ARAMCO
4	Construction of Lift station-UHT-11 L&T	UTH-11-GOSP	SAUDI ARAMCO
5	Construction of Fuel stations-FARDANIYA	RIYADH-ROAD	ENOC-UNIFCO
6	Construction of Fuel stations-KHUZAMA	KHOBAR-AZIZYA	ENOC-UNIFCO
7	Construction of Fuel stations-SEEHAT	SEEHAT	ENOC-UNIFCO
8	Construction of FLM system-GBN	YANSAB	SABIC
9	Construction of FLM System-GBN	WASIYA-SAAD	SAUDIA-RAMCO
10	Construction of CEM system-GBN	Qurayya-Hassa	SEC-Power Plant
11	Construction of CEM system-GBN	GAZLAN-Jubail	SEC-Power Plant
12	Construction of NPOC Mechanical	NPOC-Dharan	SAUDI-ARAMCO-JC
13	Construction of 13.8kv SS	JUBAIL-SWTP-9	MARAFIQ
14	Construction of AL-BAYROUNI-	Jubail-SABIC	SABIC



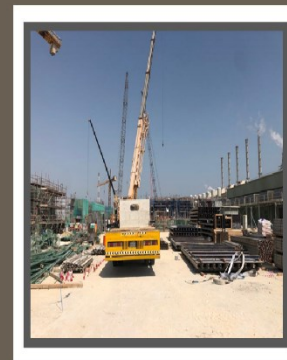
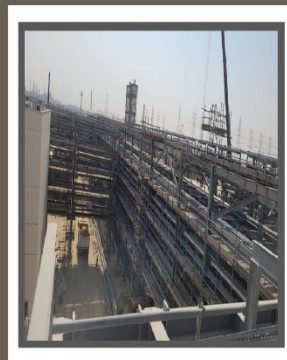
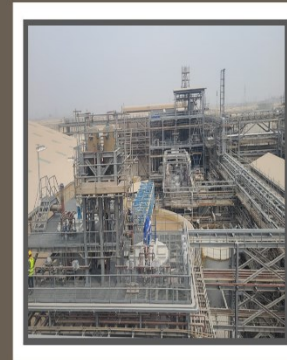
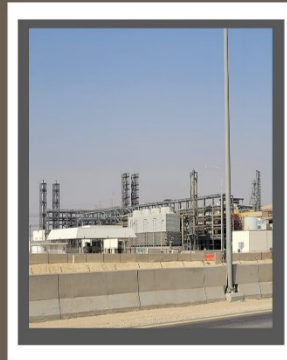
	Expansions		
15	Construction of UG-tanks AIRLIQUID	ABU HADRIYA ROAD	AIRLIQUID-GASES
16	ROWAD INDUSTRIES -UG TANKS	3rd Indst AREA	TASNEE GROUP
17	ROWAD INDUSTRIES -ARRAOW PLANT	3rd- Indst AREA	TASNEE GROUP
18	ROWAD INDUSTRIES -Electrical works	3rd Indst AREA	TASNEE GROUP
19	TASNESS-Power Generation works	JUBAIL	TASNEE GROUP
20	KHONAINI-LIFT STATION-LS-34	JUBAIL	ROYAL COMMISION
21	KHONAINI-LIFT STATION-APC-2	JUBAIL	ROYAL COMMISION
22	AL-FANAR-OHTL-DISMENLE	AL-HASSA	AL-FANAR-SEC
23	SWCC-OHTL-RHM	ABQAIQ	RHM-SAUDI ARAMCO
24	CEGELAC-OHTL-	AIRPORT ROAD	SEC-GCC
25	National scintific-ware house-sheriam William	Dammam	Private company
26	FIRE FIGHTING &FIRE ALARM SOLUTION GASCO	QASSIM	INSATALLATION
27	AL RAWABI TOWER	KHOBAR	FUNISHING WORK
28	VILLA	KHOBAR	TURKEY PROJECT
29	IP MONITORS PMU	HALF MOON DAMMAM	SUPPLY&INSTALLATION
30	FIRE FIGHTING &FIRE ALARM SOLUTION	JUBAIL	INSATALLATION



MAJOR PROJECT EXECUTED



CATEGORIES : POLO PROJECT @ FARABI
 CITY : YAMBO
 PERIOD : 8 MONTHS
 STATUS : ONGOING
 DESCRIPTION: TURNKEY PROJECT



MAJOR PROJECT EXECUTED



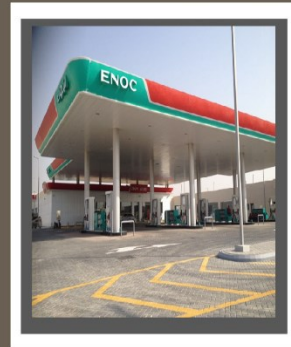
CATEGORY : SDC PLANT
CITY : JUBAIL
PERIOD : 12 MONTHS
STATUS : ONGOING
DESCRIPTION: TURNKEY PROJECT



MAJOR PROJECT EXECUTED



CATEGORY : FUEL STATION ENOC.
CITY : FARDINYAH-SEEHAT-KHOJAMA.
PERIOD : 12 MONTHS.
STATUS : COMPLETED.
DESCRIPTION: TURNKEY PROJECT.



MAJOR PROJECT EXECUTED
ENOC PROJECTS



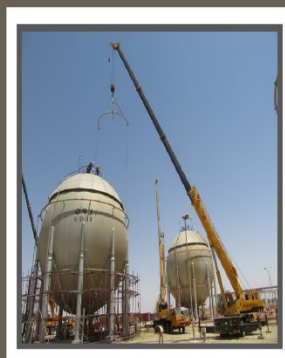
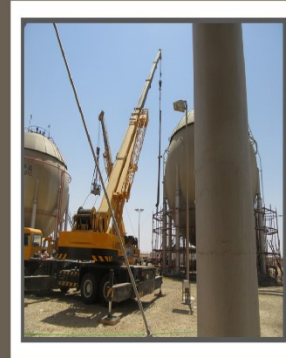
MAJOR PROJECT EXECUTED
FUEL STATION PROJECTS



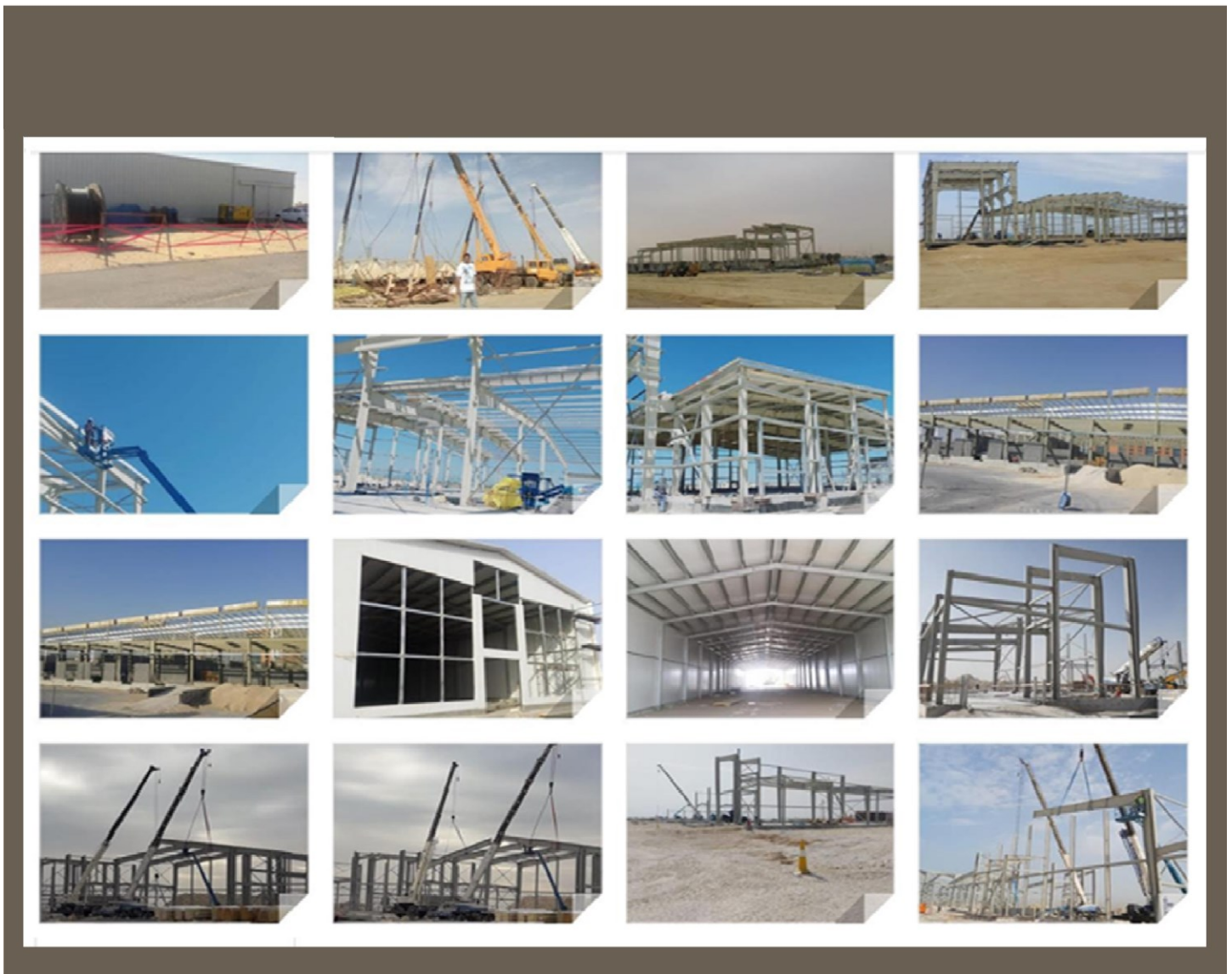
MAJOR PROJECT EXECUTED



CATEGORY : FF & FA SYSTEM INSALATION
CITY : QASSIM
PERIOD : 9 MONTHS
STATUS : COMPLETED
DESCRIPTION: INSTALLATION



MAJOR PROJECT EXECUTED
STEEL STRUCTURE ERECTION PROJECTS



HEALTH, SAFETY & ENVIRONMENT

SIT Arabian policy has been conventional on the basis that concern for the Health and Safety of our employees and guardianship of the environment are essential to the successful conduct and future growth of our business as well as being in the interest of our customers.

Our certified professional in Health, Safety & Environment conducts various training programs to get trained of all the employees after induction.

SIT Arabian is committed to provide a Safe and Healthy work place for all employees ensuring that the activities of our business are conducted in a manner that maximize protection and preservation of the environment.

Safety Policy Statement

The Company's policy is:

- To provide a safe and healthful place of employment for every employee;
- To abide by accident prevention regulations set forth by the federal, state, and local governments;
- To provide rules and regulations for the safety of employees and to warn them under certain conditions, as to the hazards of their position or employment. This includes supervision.
- To furnish reasonably safe machinery or instruments. Included is the duty to inspect and repair.
- To exercise ordinary care to select careful and competent fellow workers.

We are sincerely interested in the safety and welfare of our employees. Accident prevention is essential in maintaining an efficient operation.

It is our policy that the rules listed on the following pages should be strictly observed at all times. Although these rules are considered to be very important, it is impossible to publish a rule to cover every circumstance. If a rule that might cover any specific safety hazard condition has been omitted, that shall be no excuse for carelessness or a disregard of common sense in the performance of your work.

You are urged to cooperate fully. Abuse or a disregard of these rules is a violation of Company policy and will be treated accordingly. Remember, your help in preventing accidents benefits you and your fellow employees. We should all strive for a record of zero accidents.



INTRODUCTION

One of the major objectives of Advance Step Construction Co Ltd is to protect the Health and safety of individuals involved in work on SIT property. To attain this goal SIT has established a comprehensive Safety and Loss Control program.

This manual is developed to coordinate job site safety between contractors, Subcontractors, delivery personnel, and SIT employees. The efforts outlined in this program require the safety awareness and active cooperation of each person on the job. SIT asks for and expects the help of all contract personnel in making this a safe job site.

The Contractor should become familiar with the contents and use this manual as a guide to help carry out your work. It is impossible to include safety procedures to meet all contingencies; therefore, in such instances not provided for, you will be expected to use your best judgment.

The best possible efforts have been made to assure compliance with current Federal, State, and Local Regulations. Where inconsistencies are found current regulations will prevail.



TABLE OF CONTENTS

General Safety Rules	1
Emergency, First Aid and Medical Services	2
Asbestos/Lead Paint.....	3
Personal Protective Equipment.....	4
Safety Harnesses and Safety Nets	6
Fire Protection and Prevention	7
Housekeeping	9
Material Handling.....	10
Rigging	11
Hand and Power Tools	12
Electrical Safety.....	13
Tagging Protection.....	11
Scaffolding.....	12
Floor and Wall Openings.....	13
Cranes, Hoist, Elevators, and Conveyors.....	14
Motor Vehicles and Equipment.....	15
Excavations and Trenching.....	16
Ladders.....	17
Compressed Gas Cylinders.....	18
Use of Owner's Facilities and Security Rules.....	19
Power Plant Electrical Protection Procedure.....	20
Acknowledgement Form	21



General Safety Rules

1. Contractor Requirements

Contractors shall provide a work place free of hazardous, unsanitary or dangerous conditions for all employees.

It shall be the responsibility of the contractor to initiate and maintain such accident Prevention programs, hazardous material programs, and other programs as may be Necessary to comply with Federal, State, and Local regulations and any other such SIT requirements while performing work on SIT property.

It shall be the responsibility of the contractor to assure that all subcontractors and Contractor employees abide by the safety rules and regulations established by SIT While on SIT property.

Contractors should stay in only their assigned work areas.

Contractor's shall not bring any explosives, firearms, alcoholic beverages, or drugs on SIT property. Explosives may be brought on site by a licensed Contractor.

Contractors should wear appropriate clothing at all times. Short pants and shirtless attire Are prohibited. Sturdy shoes with steel toes are strongly recommended to be worn at all Times. Safety glasses and hard-hats shall be worn at all times.

Failure of any Contractor complying with these rules is a breach of contract and could Result in contract termination. Specific Contractor employees could also be banned from Any job site for failure to abide by these rules.

While the Contractor is on site, SIT may perform a weekly Safety Audit. If safety Deficiencies are found, the Contractor will rectify the deficiencies in a timely manner. The form to be used for the audit can be found in Appendix 5.

After the completion of the project, the SIT Project Manager will prepare a Written evaluation of contractor performance, including safety. A copy will be made Available to the Contractor upon request.

Emergency, First Aid and Medical Services

Should an emergency occur (fire, hazardous material spill, medical) the contractor should immediately notify the SIT Safety Officer.

Contractors are expected to provide standard first aid treatment and treatment for minor injuries for their own employees.

Should a serious injury occur, the contractor should call for medical aid by calling the Unit 1 & 2 Control Room Operator?

Do not move the injured person unless absolutely necessary.

Do not treat serious injuries yourself.

Prior to commencing work, every contract employee must attend a Site Safety Orientation and be trained on the Plant Emergency Procedure. The Contractor's

Employees will be issued a card that he has attended the orientation and is valid for one year. He must attend the orientation at least once every calendar year. The Contractor's Employees must also sign the plant emergency acknowledgement form that he has read And understands the procedure. This form will be kept on file and will also require Annual Updates.

If an injury or illness, that is severe enough to warrant the attention of a physician, and it is Determined by the Contractor to be worked related, the Contractor should supply a copy of an Employee injury report to the SIT Project Manager.

Asbestos

1. No insulating material, packing, or gasket material may be removed, damaged, or disturbed by material. Materials containing asbestos are known to exist at Safe Dumping Area.
2. No insulating material, packing, or gasket material may be removed, damaged or disturbed by any Contractor without prior written approval from SIT.
3. Asbestos, containing materials may only be removed by properly trained qualified individuals. Asbestos removal will be the responsibility of SIT.
4. All insulating material, packing, or gasket material will be assumed to contain asbestos unless documented evidence exists that it is not.
5. Use of any asbestos containing will be by written approval of SIT.



Lead Paint

1. Materials and coatings containing lead are known to exist at the Power Plants, Oil & Gas Plants.
2. No lead containing substance may be removed, damaged, or disturbed by any contractor without prior approval from SIT.
3. Lead containing substances may only be removed by properly trained qualified individuals.
4. At Power Plants, Oil & Gas Plants the lead abatement will be the responsibility of the Contractor.

Personal Protective Equipment (PPE)

1. General

PPE includes clothing and other accessories designed to create a barrier between the user and workplace hazards. It should be used in conjunction with engineering work practices and/or administrative controls to provide maximum employee safety and health in the workplace. All Contractors are responsible for providing training and insuring the proper use of required personal protective equipment.

2. Hard Hats

SIT requires that all contract employees, subcontractors, visitors, and delivery personnel wear hard hats on SIT property.

3. Hearing Protection

SIT requires that all Contract employees, subcontractors, visitors, and delivery personnel wear appropriate hearing protection to reduce time weighted average exposure levels on noise within OSHA permissible exposure limits. It is required for all high impulse or impact noise above 140 decibels (dB) and/or if employees work an 8-hour shift in a noise environment that exceeds 90 dB or for shorter periods in higher levels up to a limit of 15 minutes/day in 115 dB Areas. Hearing protection is recommended for all other Plant areas or activities where noise exceeds 85dB

4. Eye and Face Protection

SIT requires that all contract employees, subcontractors, visitors, and delivery personnel wear as a minimum safety eyeglasses. More specialized eye protection should be required by the



Contractor as work being performed demands. All eye wear shall meet ANSI Z87.1-1968 standards.

5. Respiratory protection

Respiratory protection that conforms to OSHA regulations shall be used when engineering controls are not adequate to protect employee from exposure to air contaminants.

6. Foot Protection

Steel toe safety shoes are highly recommended for all workers. Sneakers, Sandals or canvas shoes are not permitted.

7. Wearing Apparel

Employees whose work may bring them into contact with fire or flames may wear only clothing made from natural fibers as an outer layer. SIT promotes the use of 100% cotton clothing in these work areas.

8. Hand Protection

Wear work gloves when handling materials or using tools, which may cause blisters, burns, or cuts. Special gloves shall be worn when handling hot materials, acids, alkaline and chemicals. Approved electrical gloves shall be worn when handling energized cables or breakers racking in and out. Gloves shall be tested on an annual basis to insure their integrity.

Safety Harnesses and Safety Nets

1. Safety Harnesses

Safety harnesses, lifeline, and lanyards shall be used only for employee safe guarding. Lifelines shall be secured above the point of operation to an anchorage or structural member capable of supporting a minimum dead weight of 5,400 pounds. A lanyard shall be a minimum of ½ inch nylon rope or equivalent with a maximum length to provide for a fall of no greater than 6 feet, or to keep the employee from contacting the next lower level.

2. Safety Harnesses shall be worn when:



Working on any structure, member, or device that is of a height greater than 6 feet above the next lower level, except when working on an approved scaffold.

3. Safety Nets

Safety Nets shall be provided when work places are more than 25 feet above the ground, water surface, or other surfaces where the use of ladders, scaffolds, catch platforms, temporary floors, safety lines or safety harnesses is impractical. Safety nets, if deemed necessary, shall be supplied by the contractor.

Fire Protection and Prevention

1. Fire Protection

SIT provides, inspects, and maintains, sufficient fire protection systems and equipment to protect exposures in the permanent plant facilities. Contractors in the permanent plant facility are responsible for the following:

A. Report all fires to the SIT Shift Supervisor, no matter how small.

B. Contract personnel will evacuate immediately to an area designated by SIT plant Personnel. Contract supervision is responsible for a roll call of all personnel and should report any missing personnel with last known location to the SIT Shift Supervisor.

2. New construction or remote location (away from the plant structures area)

Contractors in Addition to complying with 1.A thru B shall provide fire protection equipment of the proper type and quantity to protect the construction site, equipment, and materials.

3. Fire Prevention

All contract personnel shall practice good housekeeping and will not let combustible scrap or refuse accumulate in the areas they are responsible for.

Obey all posted no smoking areas and do not smoke in areas where combustible or flammable material is in use.

Store oily, paint soaked, or solvent soaked rags in SIT supplied covered metal Containers.

Cut or weld only when permitted to do so. Welding or cutting should not take place near locations where flammables are present. An approved fire extinguisher should be located at



each welding or cutting area. Refer to the Welding, Cutting, and Other “Hot” Work section for more details.

Store combustible or flammable liquids in proper containers, and use proper bonding and or grounding when transferring fuels.

Report all fire hazards to the SIT Supervisor or Project Manager.

Open fires of any kind are not permitted.

Gas Cylinders should be transported and stored in an upright position. When stored, keep Them at least 25 feet from oxygen cylinders.

No material should be stored within 3 feet of an electrical panel, outlet or fire suppression System.

Smoking is prohibited in coal handling buildings, office areas, control rooms, elevators, and other designated “ non-smoking areas”.

Ignition sources such as smoking, sparks, torches and electrical arcs are not permitted where flammable liquids, gases or dust may exist.

Contractors shall provide the SIT Supervisor or Project Manager with locations and types of all combustible or flammable materials brought on to SIT property.

Housekeeping

1. Keep aisles clear for safe passage of people and material.
2. Clean up slippery substances, such as grease or oil spilled on floors or other work surfaces. Cover with “oil dry” or other non-slip material.
3. Keep tools in boxes, racks, or trays when not in use.
4. Nails, pieces of wood with protruding nails, and other sharp objects should not be left on floors and walkways. Store them where they cannot be stepped on.
5. Keep exits clear. Keep fire extinguishers readily accessible and free of obstruction.
6. Do not let materials such as scrap lumber, metal, and debris accumulate which might cause a Tripping hazard.
7. Dispose of empty bottles, cans, paper, and other containers by depositing them into the Approved SIT supplied receptacles
8. The job site should be cleaned daily and debris must be disposed of onsite, or offsite, in Accordance with all regulations.



9. Failure to maintain adequate housekeeping and clean-up may result in contractual action taken by SIT.

10. Machinery and equipment shall be kept as clean as practical at all times

11. Store flammable and combustible materials in proper containers and in flammable liquid Storage cabinets.

Material Handling

Use proper lifting techniques when handling materials. Lift heavy objects as instructed, with leg muscles and not with the back.

Stored materials must not block exits, aisles, fire protection equipment, or passageways.

Material stored inside buildings or structures under construction must not be placed within 6 ft. of any hoist way or other inside floor opening or within 10 ft. of an interior wall which SITs not extend above the top of the material stored.

Pipe, conduit, and bar stock should be stored on racks or stacked and blocked to prevent Movement.

The quantity of materials stored on scaffolds, platforms, or walkways must not exceed what's required for 1 day's operation.

Trash chutes are required for dropping materials.

Protruding nails must be bent or pulled when stripping forms or uncrating material.

All ropes, chains, cables, sling, etc., and other hoist equipment must be inspected each time before use.

A load should never be lifted and left unattended.

Properly stack and secure all materials prior to lifting or moving to prevent sliding, falling, or collapse.

Materials must never be thrown or dropped from a distance of more than 20 ft. The drop area must be barricaded to protect personnel from being struck by falling materials. Trash chutes are required for dropping materials from heights above 20 ft.



Wear safety gloves when handling materials.

Rigging

Rigging equipment shall be inspected prior to use on each shift. Defective rigging shall be removed from service.

Rigging equipment shall not be loaded in excess of recommended working load limits.

Wire rope shall be removed from service if there is a marked reduction in rope diameter, Excessive broken wires, kink damage, or other mechanical damage.

Never strain wire rope over sharp corners.

Remember that increasing the angle between the legs of a sling, increases the load on each leg. Do not paint hooks.

Only qualified personnel may be assigned to rigging operations.

Rigging equipment is not permitted to work closer than 10 feet to any power line.

All rigging devices should have permanently affixed identification stating size, grade, rated capacity, and manufacturer.

“Shop- made” grabs, hooks, clamps or other lifting devices are prohibited

All hand and power tools and similar equipment, whether issued by the employer or furnished by the employee, shall be maintained in safe condition and properly stored.

Wrenches shall not be used when jaws are sprung to the point that slippage occurs.

Impact tools, such as drift pins, wedges, chisels, etc. shall be kept free of mushroomed Heads.

Wooden handles shall be free of splinters, cracks, and be tight in the tool.

Electric power operated tools shall either be of the approved double insulated type or Grounded in accordance with OSHA requirements.

Any power-operated tools designed with guards shall have the guard in place when in use.

The use of electric cords for hoisting or lowering tools is not permitted.

Only trained employees are allowed to operate powder actuated tools.

All powder-actuated tools shall be tested daily, and all defects are corrected before use.

All powder-actuated tools should be of the low velocity, cushioned pistol grip, and piston Type Design.

Powder-actuated tools should not be used in areas where hazardous, ignitable dust gases, Or liquids are present.

All maintenance work on powder-actuated tools must be performed according to manufacturer specifications and must be done by qualified persons only.

All defective tools and equipment must be reported immediately to your Supervisor and tagged “out of service”. Temporary and makeshift repairs are prohibited.

Floor stand and bench mounted grinders shall be provided with properly adjusted work rests and grinding wheel guards.



Abrasive wheels and tools shall comply with ANSI B7.1-1970, safety code for use, care, and protection of abrasive wheels.

All employees using abrasive wheels shall be protected by eye protection equipment appropriate to the equipment and task being performed.

Gas powered tools should not be used in unventilated areas and gas should be dispensed from U.L. approved cans only. All gas-powered tools must be turned off before being refueled.

Electrical Safety

General Requirements

All construction electrical installations and temporary wiring shall be made in accordance with the National Electric Code ANSI/NFPA latest edition of all Federal, State, and Local codes.

Temporary lights will be equipped with guards. Broken burned out bulbs should be Replaced.

Temporary electric cords must be covered or elevated. They must be kept clear of walkways where they may be exposed to damage or create tripping hazards.

Extension cords used with portable electric tools and appliances must be heavy duty (no less than 12 gauge conductors) of the three wire grounding type, and must conform to OSHA standards. **NO FLAT ELECTRICAL CORDS ARE ALLOWED ON SITE.**

Voltages must be clearly labeled on all electrical equipment and circuits. Circuits must also be clearly marked for the areas of service they provide.

Prior to performing any work, electricians must “tag out” the equipment or machinery. The only exception is when power is required for “meggering” circuits.

All temporary electrical circuits shall be periodically inspected and properly maintained.

8. Safety Related Work Practices

A.No Contractor shall permit an employee to work in such proximity to any part of an electrical power circuit that the employee could contact the electrical power circuit in the course of work unless the employee is protected against electrical shock by de-energizing the circuit and grounding or guarding it effectively by insulation or other means.



B. In work areas where the exact location of underground electrical cables is unknown, employee using jackhammers, bars, or other hand tools, which may contact a line, shall be provided with insulated protective gloves, provided by the Contractor. All insulated protective gloves must be tested prior to use, in accordance with the National Electric Code.

C. Before work is begun the Contractor shall ascertain by inquiry, direct observation, or instruments, whether any part of an energized electrical power circuit, exposed or concealed is located so that the performance of the work may bring any person, tool, or machine into physical contact with the circuit. The Contractor shall post and maintain proper warning signs where such a circuit exists. The Contractor shall advise employees of the location of such line, the hazards involved, and the protective measures to be taken.

Floor and Wall Openings

1. Floor openings shall be guarded by a standard rail and toe board or cover. In general the railing shall be provided on all exposed sides, except at entrances to stairways.

2. Wall Openings from which there is a drop of more than 4 feet and the bottom of the opening is less than 3 feet above the working surface will have a standard guardrail.

3. Open sided floor or platforms 6 feet or more above the adjacent floors or ground level and runways 4 feet or more above the ground floor level shall be provided with standard handrails and toe boards.

4. Stairways having four or more risers shall be equipped with standard stair railing on both sides.

5. Guarding and/or covers are not to be removed until other means of fall protection are in place. Employees installing or removing guarding or covers should be protected by alternative fall protection.

6. Employees are prohibited in any area that could expose them to a fall unless proper fall protection procedures are in place.

7. Stairways should be free of hazardous projections, debris, and other loose materials

Cranes, Hoist, Elevators & Conveyors

1. Cranes



- A. All cranes must be operated and maintained in accordance with established standards, specifications, and limitations.
- B. Only trained, qualified employees are permitted to operate any crane or rigging equipment. Training includes an in-depth review of the operating characteristics and limitations of the equipment.
- C. A fire extinguisher is to be kept in the crane's cab at all times.
- D. "Shop-made" grabs, hooks, clamps, or other lifting devices are prohibited.
- E. Slings should not be shortened by using knots, bolts, or other makeshift designs.
- F. Wire rope slings should be padded to protect against damage from sharp corners.
- G. Hard hats and proper personal protective equipment should be worn while operating or working close to a crane.
- H. Rated load capacities and recommended operating speeds, special hazard warnings, or instruments shall be conspicuously posted.
- I. Cranes shall be inspected prior to use each shift. Records of inspections shall be kept as required by law.
- J. Hand signals to crane operators shall be by ANSI standards for the type of crane in use.
- K. Accessible areas within the swing radius must be barricaded. Personnel are never allowed to work under suspended loads. Stay away as far as possible.
- L. Do not ride hook or load.
- M. Safety latches are required on all crane hooks.
- N. Do not operate crane or bring its loads within 10 feet of electrical distribution lines.
- O. The use of a crane to hoist employees on a personnel platform is prohibited, except when the erection, use, and dismantling or conventional means of reaching the work site would be more hazardous or is not possible because of structural design or work site conditions.

The following precautions are required when using cranes to hoist personnel:



1. Hoisting of the personnel platform shall be performed in a slow, controlled manner with no sudden movements of the crane platform.

2. Load lines shall be capable of supporting without failure at least ten times the maximum intended load.

3. A trial lift with the unoccupied personnel platform loaded at least to the anticipated lift weight of personnel and material shall be made from the ground level with full crane operational tests. The trial lift shall be repeated prior to hoisting personnel any time the crane is moved and set up in a new location or returned to a previously used location. In every case the trial lift must be conducted at the beginning of every shift.

4. Work Practices

Employees shall keep all body parts inside the platform during raising, lowering, or positioning.

Employees being hoisted shall remain in continuous sight of and direct communication with the crane operator.

Employees occupying the personnel platform shall use a body harness system with the lanyard attached to the lower load block, overhaul ball, or structural member within the platform.

Hoisting of employees while the crane is traveling is prohibited.

Motor Vehicles and Equipment

Contractors may not drive privately owned vehicles on SIT property unless the vehicles are covered by the contractor's liability insurance. Proof of coverage must be provided to the SIT Supervisor or Project Manager prior to vehicle entry to SIT property.

1. The parking brake must be set whenever the equipment or vehicle is parked. Equipment or vehicles that have no parking brake must have the wheels chocked when parked.

2. Seat belts must be provided and used on all vehicles and equipment on SIT property.

3. Do not ride on the bed of trucks containing materials which are not properly secured to prevent movement.



4. All personnel are prohibited from riding on loads, fenders, running boards, and tailgate or with arms or legs dangling over the side.
5. Drivers must not move vehicles until riders comply with all safety rules.
6. Do not back up vehicles when the view to the rear is obstructed unless:
It is equipped with an audible back up alarm which is audible above the surrounding noise for a distance of 200 feet.
An observer signals it is safe to do so.
7. Obey posted speed limits.
8. Only authorized, licensed drivers are permitted to operate vehicles or equipment. Accidents must be reported to the SIT Protective Services immediately.
9. Engines must be shut off during all maintenance, fueling operations, and while left unattended. When vehicles are parked unattended, remove ignition keys.
10. Employees are required to obey all state law, local, and company laws, rules and regulations while operating vehicles or equipment.

Excavations and Trenching

1. All excavations and trenching operations must conform to established regulations and standards.
2. Sides of excavations in unstable or soft material or more than 5 feet in depth shall be shored, sloped, or otherwise supported. One of the following methods of support should be used to ensure worker safety: shoring sheeting; tightly placed timber shores; bracing; trench jacks; piles; or other materials installed in a manner strong enough to resist the pressures surrounding the excavation.
3. When employees are required to work in trenches 4 feet or more deep, an adequate means of egress shall be provided so as to require no more than 25 feet of lateral travel for employees.
4. Never pile soil or material closer than 2 feet from the edge of excavations.
5. Walkways with standard guardrails must be provided where employees are required to cross over excavations or trenches.



6. Daily inspections of excavations shall be made by a competent person for evidence of a situation that could result in cave-ins, indications of protective systems, failures, hazardous atmospheres, or other hazardous conditions. Inspections shall also be conducted after every rainstorm or other hazard increasing occurrence. These inspections are only required when employee exposure can be reasonably expected.
7. Shoring systems should be installed from the top down. Crossbeams should be placed in a horizontal position and spaced vertically at appropriate intervals. Braces must also be secured to prevent sliding, falling, or kick outs.
8. OSHA standards require that diversion dikes or ditches be used to prevent surface water from entering an excavation and to provide adequate drainage of the area adjacent to the excavation. Water should not accumulate in a trench or excavation as it causes erosion and soil softening.
9. Excavations greater than four feet deep should be inspected daily for oxygen deficiencies and hazardous gases, etc. If hazardous conditions exist, proper respiratory protection or ventilation should be provided by the Contractor.
10. Locations of all underground utilities should be located before excavation begins.

Ladders

1. All ladders shall be inspected for defects prior to use. Any defective ladder shall be properly marked, removed from service, removed from the work area, and reported to your supervisor for repair or replacement.
2. Portable ladders shall be placed on a substantial base at a 4 to 1 pitch, have clear access at top and bottom, and extend at least 36 inches above the landing and be secured against movement when in use.
3. Always face the ladder and use both hands when climbing up or down. If you have to raise or lower tools, use a line.
4. Do not use metal ladders for electrical work or where they may contact electrical conductors.
5. Do not use stepladders as straight ladders.
6. Avoid over reaching when working from ladders.



7. Manufactured ladders must comply with OSHA, ANSI, manufacturer and job specifications.
8. The six-foot fall protection procedure applies when working from a ladder. All ladders should be secured with a rope or other substantial device.
9. Ladders should be maintained free of lines, ropes, hoses, wires, cables, oil, grease, and debris. No objects should be left on ladders.
10. Never stand or sit on the top rung of a stepladder.
11. Never climb or work from the back of a ladder.
12. Never work with another person on the same ladder.

Compressed Gas Cylinders

1. Proper marking of compressed gas cylinders to identify the contents, together with proper outlet connections, is important. The use of color coding is desirable.
2. Examine cylinders containing compressed gases for signs of damage or leakage.
3. The protective caps of gas cylinders must be kept on all cylinders when not in use.
4. All cylinders must be properly secured to prevent tipping.
5. All gas cylinders whether in use or in storage must be secured in an upright position by some substantial means such as chains or ropes.
6. Store cylinders in areas where they will be protected from falling objects, sources of heat, and electrical wiring.
7. Keep outside storage areas free of combustible materials.
8. Oxygen and Fuel gas cylinders in storage must be separated from each other by a distance of 20 feet or by a 5-foot high barrier wall which has a minimum 1 - hour fire rating.
9. Compressed Gas cylinders shall not be taken into confined spaces.
10. Do not drop or bump cylinders.



11. Secure cylinders when lifted or transported by a mechanical device.

Use of Owners Facilities and Security Rules

1. All contractors, with six or more people per shift, are to provide and maintain their own rest rooms.

2. Contractors are not to use plant lunchrooms except to access the vending machines.

3. Contractors may not use plant shower facilities.

4. Any contractor's employee violating this policy may be subject to disciplinary action.

5. Contact the SIT Supervisor or Protective Services concerning parking and entrance for contract personnel.

6. All vehicles are subject to search upon entering or exiting SIT property.

7. Contractor personnel are encouraged to lock their trailers and gang boxes and to put away all equipment when not in use. Protective Services may check work site areas for security deficiencies.

8. Protective Services shall be notified anytime theft of equipment or tools is found.

9. Material, tools and equipment, other than that of the employee, will not be taken from site without a "Property Removal Pass"

10. Upon completion of the job, all trailers leaving the site shall be inspected by the SIT Project Manager and other onsite contractor representatives. After the inspection, the trailer will be sealed by the SIT Project Manager and the trailer released to leave the site. The SIT Project Manager will fill out a "Trailer Inspection" form. No trailer shall leave the site without a proper seal. Trailer inspections will only be performed between the hours of 8:00 AM and 3:00 PM.

Acknowledgement Form

The rules, programs, and procedures stated above in this safety manual are not intended to cover all the possible situations you will be faced with on the job. SIT encourages you to act in a safe and responsible manner at all times, both on and off the job. As the contractor's representative, I have read this safety manual, understand it, and agree that all the contractor's employees and sub-contractors will abide by it.



I understand that violation to these rules may lead to dismissal of the contractor and/or

Sub-contractor,

Contractor:

Print Name:

Signature:

Date:

Stop Work

Effective Date: January 18, 2021

1.0 PURPOSE

The purpose of this procedure is to ensure that all employees are given the responsibility and authority to stop work when employees believe that a situation exists that places them, their coworker(s), contracted personnel, or the public at risk or in danger; could adversely affect the safe operation or cause damage to the facility; or result in a release of radiological or chemical effluents to the environment above regulatory requirements or approvals; and provides a method to resolve the issue (see Appendix A). Maintaining a diligent questioning attitude is vital to safe execution of work-scope and is a cornerstone to effective Conduct of Operations and Integrated Safety Management.

Portions of this procedure implement requirements of the Worker Safety and Health Program Plan for compliance to 10 Code of Federal Regulations (CFR) 851, “Worker Safety and Health Program” and are bracketed in the text. This procedure also implements the “Stop Work and Shutdown Authorization” clause included in section H of each SIT’s Prime Contracts (see Appendix B).



This procedure extends the authority to stop work to situations where an employee believes there is a need to clarify work instructions; or to propose additional controls.

2.0 SCOPE

This procedure is applicable to all contractors and subcontract personnel working at the site.

3.0 RESPONSIBILITIES

3.1 Employees

In supporting safe execution of work, all personnel, have the following responsibilities
The responsibility and authority to stop work or decline to perform an assigned task without fear of reprisal, to discuss and resolve work and safety concerns. The Stop Work may include discussions with co-workers, supervision, or safety representative to resolve work related issues, address potential unsafe conditions, clarify work instructions, propose additional controls, etc.

The responsibility and authority to initiate a Stop Work IMMEDIATELY, without fear of reprisal, when the employee believes a situation exists which places himself/herself, a coworker(s), or the environment in danger or at risk.

The responsibility to report any activity or condition the employee believes is unsafe or for which they have initiated a Stop Work. Notification should be made to the affected worker(s) and to the supervisor or their supervisor's designee at the location where the activity or condition exists.

The responsibility to notify their supervisor if a raised Stop Work issue has not been resolved to their satisfaction through established channels prior to the resumption of work. Alternatively, contact the employer's Employee Concerns Program or the SIT Employee Concerns Program.

Employee can contact their safety representative or union safety representative with a concern or to initiate a stop work, if the employee prefers to remain anonymous.

3.2 Management/Supervisor/Person in Charge (PIC)/ Field Work Supervisor (FWS)

1. Management and supervision are committed to promptly resolve issues resulting from an Employee-raised Stop Work [10 CFR 851.20]. Management (e.g., Directors, Managers, and Supervisors) responsibilities are to:

- Resolve any issues that have resulted in an individual stopping a specific task(s) or activity.



Provide feedback to individual/s and the affected work group who have exercised their Stop Work responsibility on the resolution of their concern prior to resuming work. If the employee that issued a stop work is not available due to reasons such as vacation, PTB, PTO, shift change, or training then the supervisor provides the feedback to the safety representative and union safety representative, prior to resuming work.

Notify the employer's Safety Representative and the Union Safety Representative, when bargaining unit personnel are affected, if a raised stop work issue has not been resolved.

Notify the SIT Facility Representative if the Contractor's Stop Work action meets the Stop Work Criteria defined in Appendix B.

Ensure no actions are taken as reprisal or retribution against individuals who raise safety concerns or stop an activity they believe is unsafe.

If a stop work is not brought up by a bargaining unit employee, but SITs impact bargaining unit personnel, then also notify the union safety representative.

3.3 Safety Representatives(s) and Union Safety Representative(s) are Responsible to:

Assist employees, supervision and management in the resolution of safety issues and concerns. Immediately contact management and work to resolve issues when an employee has called a situation to their attention that has not been resolved.

Discuss resolution with employees involved in a work stoppage where resolution was completed after their shift or when they were unavailable, or where he/she acted as their representative in reaching resolution.

Work as the agent of an employee that prefers to remain anonymous to work directly in the resolution of the stop work.

4.0 IMPLEMENTATION

Effective Immediately,

5.0 PROCESS

Actioner Step Action

Employee 1. Stop work if an activity or condition is believed to be unsafe, such as:



- a. A situation exists that places them, their coworker(s), contracted personnel, or the public at risk or in danger;
 - b. A situation could adversely affect the safe operation or cause damage to the facility; or
 - c. A situation could result in a release of radiological or chemical effluents to the environment above regulatory requirements or approvals.
 - d. To clarify work instructions or to propose additional controls
- the work/activity is in, or placed in a safe condition and immediately notify supervision/management and affected workers when you stop work or decline to perform an activity.

Manager/

2. Supervisor/PIC/ FWS

3. Resolve any issues that have resulted in an employee stopping work or an activity.

Involve individuals who initiated the Stop Work or their appropriate safety representatives if the individual is not available, in reaching mutual agreement on the resolution or proposed actions necessary to return to work.

Be sure any necessary corrective or compensatory actions are taken before resuming an activity and are documented* in accordance with Contractor procedures (logbook or other established method of reporting/tracking/communicating safety issues and corrective action management).

Actioner Step Action

4. If a Stop Work has not been resolved to the mutual agreement of manager and employee, then the stop work remains in place and the Supervisor/PIC/FWS will notify the appropriate company management, safety representative and union safety representative. Resolution of the stop work resides with the union safety representative and company management to resolve and/or propose actions necessary to return to work. Work may be resumed when union safety representation and management agree that the issue has been resolved. The objective is to reach resolution at the lowest levels of engagement.

Notify the SIT Facility Representative that a Stop Work has resulted in an unresolved issue.

*NOTE: For resumption of radiological work, consult the Radiological Control Manual for additional approval requirement.

5.0 REFERENCES

Hanford Site Stop Work Policy



10 CFR 830, “Nuclear Safety Management,” Code of Federal Regulations
10 CFR 851, “Worker Safety and Health Program,” Code of Federal Regulations
10 CFR 835, “Occupational Radiation Protection,” Code of Federal Regulations*

Appendix A Stop Work Policy

Stop Work Responsibility: Every Hanford site employee, regardless of employer, has the responsibility and authority to stop work IMMEDIATELY, without fear of reprisal, when the employee believes:

1. Conditions exist that pose a danger to the health and safety of workers or the public; or
2. Conditions exist, that if allowed to continue, could adversely affect the safe operation of, or could cause serious damage to, a facility; or
3. Conditions exist, that if allowed to continue, could result in the release from the facility to the environment of radiological or chemical effluents that exceed applicable regulatory requirements or approvals.

Reporting Unsafe Conditions: Employees are expected to report any activity or condition which he/she believes is unsafe. Notification should be made to the affected worker(s) and then to the supervisor or designee at the location where the activity or condition exists. Following notification, resolution of the issue resides with the responsible supervisor.

Right to a Safe Workplace: Any employee who reasonably believes that an activity or condition is unsafe is expected to stop or refuse work without fear of reprisal by management or coworkers and is entitled to have the safety concern addressed prior to participating in the work.

Stop Work Resolution: If you have a "stop work" issue that has not been resolved through established channels, immediately contact your employer’s Safety Representative or your Union Safety Representative. Alternatively, you may contact the employer’s Employee Concerns Program or the SIT Employee Concerns Program.

Appendix B

SIT Facility Representative (FR) Notification Requirements



If any of the following criteria is met or notification of facility management is required for the Issue, the Supervisor/Manager will notify the FR on a 24 hour real time basis.

Stop Work Criteria:

1. Conditions exist that pose an imminent danger to the health and safety of workers or the Public; or
2. Conditions exist, that if allowed to continue, could adversely affect the safe operation of, or could cause serious damage to, the facility; or
3. Conditions exist, that if allowed to continue, could result in the release from the facility to the Environment of radiological or chemical effluents that exceed applicable regulatory requirements or approvals.

The following definitions shall be used in conjunction with the above stated criteria:

Imminent Danger: Any condition or practice such that a hazard exists that could reasonably be expected to cause death, serious physical harm, or other serious hazard to employees, unless immediate actions are taken to mitigate the effects of the hazard and/or remove employees from the hazard.

Adversely Affects Safe Operation of Facility or Serious Facility Damage: A condition, situation, or activity that if not terminated or mitigated could reasonably be expected to result in: nuclear Criticality; facility fire/explosion; major facility or equipment damage or loss; or, a facilities.



EXHIBIT "H"

QUALITY ASSURANCE/QUALITY CONTROL

SIT Arabian is Quality Assurance function shall be so organized as to be free from commercial and contractual restraints. It shall operate without let or hindrance from production department and shall represent SIT Arabian on all matters relating to Quality Assurance.

Quality is enhanced by working in a systematic method of formalized procedures designated to eliminate the occurrence deficiencies. To promote uniformity of working methods throughout, procedures fundamental to SIT Arabian shall be implemented at all times without unauthorized deviation.

In order to achieve the objective it is the policy of SIT Arabian conventional, plan and maintain an efficient Quality program, planned and developed in conjunction with other management functions.

The Management of SIT is committed to the principal of providing product and services of high quality, to the complete satisfaction of its clients. The underling objective behind this principal is to enhance the reputation of the company, and its good working relationship with its clients, thus creating the right environment for further growth and profitability.

The Operation of the quality systems is subject to continuous review at the highest management level, to ensure that the established standards are maintained and improved wherever necessary.

The management actively encourages all personnel to demonstrate their own personal commitment to quality, and to accept the responsibility for the achievement of the highest standards of workmanship, to further enhance the reputation of the company.

Shaik Sayeed

General Manager



EXHIBIT "I" CONTRACTOR EMPLOYEES AFFAIRS

DETAILED OUTLINE

(In your company's format)

We have fully trained staff to handle our workers affairs. They receive them from airport when they arrive from their homeland. Provide them suitable accommodation and take them for medical checkup then our camps are Being run under the camp Boss Supervisor. We pay them salaries on time every month. Everything going smooth. We don't see any problem about our workers and staff.

2.11.1 We make payment 1st date of every month.

2.11.2 After 1 year completed our employee go on vocation for 45 days.

2.11.3 Our pick & drop to the employee from job site we use the van. And for the office use we have the cars.

2.11.4 We have different compound & villas at different job site such as at Tuqba, Riyadh & Al Rayan. We provide all the facilities to our labor like Bad, Blanket, AC and Compound & villa have all the required things which required to labor like kitchen & wash rooms and small playing ground.



FINANCIAL HISTORY

SIT GROUP IS AN ORGINAZATION WITH A VERIFIABLE HISTORY OF SUCCESSFUL PROJECTS AND SOLID HISTORY OF DEMONSTRATED FINANCAL STABILITY .WITH OVER TWO DECADES IN BUSINESS,SIT ARABIAN CONTRACTING COMPANY SUCCESSFUL AND FINANCIALLY SECURE PROJECT HISTORY PROVES WE HAVE THE INTEGRITY , EXPERIENCE AND RESOURCES TO SUCCEED.

WE PROVIDE REFERENCE TO OUR BANKS, FINANCIAL INSTITUTION AND SUPPLIERS UPON REQUEST.WE POSSESS SOLID RELATIONSHIPS WITH THESE INSTITUTIONS TO HELP US PROVIDE THE BEST PRICING AND QUALITY FOR OUR PROJECTS





نموذج رقم الحساب الدولي (IBAN)

Dear Customer : SIT ARABIAN CONTRACTING CO LTD		عزيزنا العميل :
We would like to thank you for banking with Bank AlJazira. And would also like to assure you that we will continue to deliver premium service and maximum accuracy and security regarding your transactions, and according to your request , herein below is your account and IBAN number .		السادة / شركة صديقي انفراتيك العربية المحدودة
We would like to highlight that you can use your IBAN number in the following services:		نود أن نتقدم اليكم بجزيل الشكر والامتنان على تعاملكم مع بنك الجزيرة . ولنؤكد لكم استمرارنا في تقديم أفضل الخدمات وضمان اقصى حدود الدقة والأمان أثناء تعاملاتكم المصرفية , وبحسب طلبكم تم طباعة هذا النموذج , وستجدون ادناه رقم حسابكم ورقم الحساب الدولي الخاص بكم (IBAN) .
Account Number	0076 - 95022545- 001	رقم الحساب
IBAN Number	IBAN SA62 6010 0007 6950 2254 5001	رقم الايبان
Account currency	SAR	عملة الحساب
<p>In receiving remittances , dividends, or salaries in your account locally or internationally.</p> <p>In uploading local or international accounts in Jazira Online , Jazira smart or phone banking.</p>		<p>ونود ان نلفت نظركم أن رقم الحساب الدولي (IBAN) يتم استخدامه في العمليات المصرفية التالية :</p> <ul style="list-style-type: none"> • في حال انتظاركم حوالة أو ارباح أسهم أو ايداع رواتب من خلال بنوك محلية أو دولية يتم اخطار الدهة المنفذة . • في حال أردتم حفظ بعض أرقام حسابات المستفيدين ببنوك محلية في الجزيرة أون لاين أو الجزيرة سمارت أو في الهاتف المصرفي ليتم الرجوع اليها عند الحاجة
Yours sincerely , Bank AlJazira		مع فائق التقدير بنك الجزيرة
Swift Code of Bank AlJazira is: BJAZSAJE		سويفت كود الخاص ببنك الجزيرة : BJAZSAJE

التوقيع والختم

بنك الجزيرة
فرع الهدا العبر
BANK ALJAZIRA
Al Huda Branch - Al Khabat





OFFICE INDIA TELEPHONE

9-4-77/A/1&2,
First Floor,
Al Hasnath Colony,
Hyderabad -500008 .A.P-
India

Tel : +914032493194,
: +9181068 00207
Mobile : +91991248 5476
: +919014187332
: +919703151198

OFFICE UK TELEPHONE

197 Olton Boulevard West,
Tyseley, Birmingham,
B11 3JD, United Kingdom.

Tel : + 44 1609930336.
Mobiles : + 44 798568 6715.
: + 44 7535123450.
: + 44 78 46074687.

OFFICE Middle East TELEPHONE

Office 12 : Entrance 629 Shaik
Abdulla Avenue, Central
Manama-0302 Kingdom of
Bahrain

Tel : (+973) 17231303
Mobiles : +973 33871886/33214361
: +973 33214349 / 34138479.

P.O. Box No : 34446 Al Khobar 31952, KSA
Al Khobar
Kingdom of Saudi Arabia

Tel : +9668111000479 /
: +966 13 8828805
Mobile : +966 563084888/0568700056

Contact Name & Number :

Mr. Shaik Sayeed Mobile : +966563084888
(Director) SIT Group

Mr. Mohiuddin Ali Siddiqui Mobile : +966507012329
(Director) SIT

Mr. Syed Ali Mobile : +966568700056
(Business Director)